

Southwest Licking School District Preconstruction

Jul-10-18 16:55

Activity ID	Activity Name	OD	Activity % Complete	Start	Actual Start	Finish	Actual Finish	Total Float
Southwest Licking School District Preconstructor								
		1560		Nov-01-17A	Nov-01-17	Nov-07-23		0
		1560		Nov-01-17A	Nov-01-17	Nov-07-23		0
		785		Nov-01-17A	Nov-01-17	Nov-17-20		0
RFP Schedule								
New High School								
A1800	New High School Preconstruction Start	0	100%	Nov-01-17A	Nov-01-17	Mar-30-18A	Mar-30-18	0
A1190	New High School SD Phase	5	100%	Nov-02-17A	Nov-02-17	Mar-30-18A	Mar-30-18	0
A1220	New High School SD Drawings Complete	0	100%	Mar-30-18A	Mar-30-18	Mar-30-18A	Mar-30-18	0
A1810	New High School DD Drawings	69	69%	Mar-30-18A	Mar-30-18	Aug-06-18		0
A1620	New High School SD Review of Provisional Drawings	10	100%	Apr-02-18A	Apr-02-18	Apr-13-18A	Apr-13-18	0
A1630	New High School SD Estimate	15	100%	Apr-02-18A	Apr-02-18	May-07-18A	May-07-18	0
A1750	New High School Design Modification to Site	10	100%	Apr-13-18A	Apr-13-18	Apr-17-18A	Apr-17-18	0
A1640	New High School SD Phase Submission	10	100%	Apr-27-18A	Apr-27-18	Jun-21-18A	Jun-21-18	0
A1730	New High School SD Phase Reconciliation	10	100%	May-07-18A	May-07-1	Jun-21-18A	Jun-21-18	0
A1460	New High School Mkt-DD Drawings	0	0%	Aug-06-18		Aug-06-18		0
A1520	New High School DD Phase Drawing Completion	48	0%	Aug-06-18		Oct-12-18*		0
A1540	New High School Mkt-DD Review and Collaboration	20	0%	Aug-07-18		Sep-05-18		83
A1550	New High School Early Site GMP Drawings Complete	0	0%	Aug-29-18		Aug-26-18*		0
A1770	New High School Early Site GMP Review of Drawings	10	0%	Aug-29-18		Sep-12-18		136
A1830	New High School Early Site GMP Estimate	15	0%	Aug-29-18		Sep-19-18		136
A1890	New High School Early Site Complete GMP Documents	15	0%	Aug-29-18		Sep-19-18		131
A2320	New High School Early Site Bid Documents	15	0%	Aug-29-18		Sep-19-18		134
A2310	New High School Early Site Bid Documents Complete	0	0%	Sep-20-18		Sep-20-18		134
A1840	New High School Early Site GMP Reconciliation	1	0%	Sep-20-18		Sep-26-18		136
A1650	New High School Early Site Submittal GMP for Review	5	0%	Sep-20-18		Sep-24-18		131
A3520	New High School Early Site Issue Bid Documents	3	0%	Sep-20-18		Sep-27-18		134
A1900	New High School Early Site GMP Review Meeting	1	0%	Sep-27-18		Oct-11-18		131
A1760	New High School Early Site Bidding Period	10	0%	Sep-28-18		Oct-11-18		131
A2220	New High School Early Site GMP Corrections/Finalization	3	0%	Sep-28-18		Oct-03-18		134
A2230	New High School Early Site Submittal Final GMP	1	0%	Oct-03-18		Oct-10-18		134
A2240	New High School Early Site GMP Execution	5	0%	Oct-04-18		Oct-11-18		131
A1780	New High School Early Sitework Bids Due	0	0%	Oct-12-18		Oct-15-18		131
A3530	New High School Early Site Issue Contracts	2	0%	Oct-12-18		Oct-12-18		56
A1530	New High School DD Drawings Complete	0	0%	Oct-12-18		Jan-31-19		0
A1560	New High School GMP Phase	76	0%	Oct-12-18		Oct-26-18		56
A1670	New High School DD Review of Provisional Drawings	10	0%	Oct-12-18		Nov-02-18		60
A1690	New High School DD Estimate	15	0%	Oct-12-18		Nov-02-18		60
A1010	New High School Early Sitework	107	0%	Oct-16-18		Mar-18-19		131
A1690	New High School DD Phase Submission	10	0%	Oct-26-18		Nov-09-18		56
A1740	New High School DD Phase Reconciliation	1	0%	Nov-02-18		Nov-05-18		60
A1570	New High School GMP Drawings Complete	0	0%	Jan-31-19		Jan-31-19		0
A1580	New High School Bid Documents	26	0%	Jan-31-19		Mar-08-19		4
A1700	New High School GMP Review of Provisional Drawings	10	0%	Jan-31-19		Feb-14-19		10
A1710	New High School GMP Estimate	15	0%	Jan-31-19		Feb-21-19		14
A2270	New High School Complete GMP Documents	20	0%	Jan-31-19		Feb-28-19		0
A1720	New High School GMP Phase Submission	10	0%	Feb-14-19		Feb-28-19		10
A1790	New High School GMP Reconciliation	1	0%	Feb-21-19		Feb-22-19*		14
A2250	New High School Submittal GMP for Review	5	0%	Feb-28-19		Mar-07-19		0
A2280	New High School GMP Review Meeting	1	0%	Mar-07-19		Mar-08-19		0
A1590	New High School Bid Documents Complete	0	0%	Mar-08-19		Mar-08-19		4
A1820	New High School Bid Doc Review of Provisional Drawings	5	0%	Mar-08-19		Mar-15-19		4
A2290	New High School GMP Corrections/Finalization	3	0%	Mar-08-19		Mar-13-19		0
A3510	New High School Issue Bid Documents	3	0%	Mar-08-19		Mar-13-19		6
A2300	New High School Submittal Final GMP	1	0%	Mar-13-19		Mar-14-19		0
A2260	New High School GMP Execution	5	0%	Mar-14-19		Mar-21-19		0

- █ Actual Work
- █ Remaining Work
- █ Critical Remaining Work
- ◆ Milestone
- ↔ Summary

Nov-01-17
Nov-07-23
data date: Jul-06-18
page 1 of 3

Southwest Licking School District Preconstruction
Schedule Update
Date Jul-06-18



Activity ID	Activity Name	CO	Activity %	Start	Actual Start	Finish	Actual Finish	Total Float	Notes
A1600	New High School Bidding Period	15	0%	Mar-21-19		Apr-11-19		0	
A1610	New High School Bids Due	0	0%	Apr-11-19		Apr-11-19		0	
A1660	New High School Issue Contracts	7	0%	Apr-11-19		Apr-22-19		0	
A1020	New High School Building Construction	411	0%	Apr-22-19		Nov-17-20		0	
New Elementary School		678	0%	Nov-01-17A	Nov-01-17	Jun-18-20		882	
A1860	New Elementary School Preconstruction Start	0	100%	Nov-01-17A	Nov-01-17	Jun-18-20		882	Preconstruction Start
A2470	New Elementary School SD Drawings	100	100%	Nov-02-17A	Nov-02-17	Mar-30-18A	Mar-30-18		Elementary School SD Drawings
A1870	New Elementary School DD Drawings	70	49%	Mar-30-18A	Mar-30-18	Aug-24-18		911	New Elementary School DD Drawings
A2480	New Elementary School SD Drawings Complete	0	100%	Apr-02-18A	Apr-02-18	Mar-30-18A	Mar-30-18		Elementary School SD Drawings Complete
A1880	New Elementary School SD Review of Provisional	10	100%	Apr-02-18A	Apr-02-18	May-07-18A	May-07-18		Elementary School SD Review of Provisional Drawings
A1910	New Elementary School SD Estimate	15	100%	Apr-02-18A	Apr-02-18	May-04-18A	May-04-18		Elementary School SD Estimate
A2010	New Elementary School Design Modifications to R	10	100%	Apr-09-18A	Apr-09-18	Apr-20-18A	Apr-20-18		Elementary School Design Modifications to Roof & Site
A1920	New Elementary School SD Phase Submission	10	100%	Apr-30-18A	Apr-30-18	Jun-21-18A	Jun-21-18		New Elementary School SD Phase Submission
A1930	New Elementary School SD Phase Reconciliation	10	100%	May-07-18A	May-07-1	Jun-21-18A	Jun-21-18		New Elementary School SD Phase Reconciliation
A2030	New Elementary School DD Drawings Complete	0	0%	Aug-24-18				952	New Elementary School DD Drawings Complete
A2040	New Elementary School GMP Phase	53	0%	Aug-24-18		Nov-08-18		911	New Elementary School GMP Phase
A2050	New Elementary School DD Review of Provisional	10	0%	Aug-27-18		Sep-11-18		952	New Elementary School DD Review of Provisional Drawings
A2060	New Elementary School DD Estimate	5	0%	Aug-27-18		Sep-04-18		966	New Elementary School DD Estimate
A1970	New Elementary School Early Site GMP Drawings	0	0%			Aug-28-18		887	New Elementary School Early Site GMP Drawings Complete
A1980	New Elementary School Early Site GMP Revk	10	0%	Aug-29-18		Sep-12-18		887	New Elementary School Early Site GMP Review of Drawings
A1990	New Elementary School Early Site GMP Estimate	15	0%	Aug-29-18		Sep-19-18		903	New Elementary School Early Site GMP Estimate
A2330	New Elementary School Early Site Complete GMP C	15	0%	Aug-29-18		Sep-19-18		889	New Elementary School Early Site Complete GMP Documents
A2450	New Elementary School DD Phase Reconciliation	1	0%	Sep-04-18		Sep-05-18		899	New Elementary School DD Phase Reconciliation
A2080	New Elementary School DD Phase Submission	10	0%	Sep-11-18		Sep-25-18		952	New Elementary School DD Phase Submission
A2460	New Elementary School Early Site Bid Documents	0	0%			Sep-19-18		899	New Elementary School Early Site Bid Documents Complete
A2000	New Elementary School Early Site GMP Reconcil	1	0%	Sep-20-18		Sep-20-18		903	New Elementary School Early Site GMP Reconciliation
A2340	New Elementary School Early Site Submit GMP for	5	0%	Sep-20-18		Sep-26-18		889	New Elementary School Early Site Submit GMP for Review
A3560	New Elementary School Early Site Issue Bid Docu	3	0%	Sep-20-18		Sep-24-18		899	New Elementary School Early Site Issue Bid Documents
A2020	New Elementary School Early Site GMP Bidding Pe	10	0%	Sep-27-18		Oct-10-18		887	New Elementary School Early Site GMP Bidding Period
A2350	New Elementary School Early Site GMP Review M	1	0%	Sep-27-18		Sep-27-18		889	New Elementary School Early Site GMP Review Meeting
A2360	New Elementary School Early Site GMP Corrector	3	0%	Sep-28-18		Oct-02-18		889	New Elementary School Early Site GMP Correctors/Finalization
A2370	New Elementary School Early Site Submit Final GA	1	0%	Oct-03-18		Oct-03-18		889	New Elementary School Early Site Submit Final GMP
A2380	New Elementary School Early Site GMP Execution	5	0%	Oct-04-18		Oct-10-18		889	New Elementary School Early Site GMP Execution
A2070	New Elementary School Early Site GMP Bids Due	0	0%			Oct-10-18		887	New Elementary School Early Site GMP Bids Due
A3570	New Elementary School Early Site Issue Contracts	2	0%	Oct-11-18		Oct-12-18		887	New Elementary School Early Site Issue Contracts
A2100	New Elementary School Early Site GMP	107	0%	Oct-15-18		Mar-15-19		873	New Elementary School Early Site GMP
A2110	New Elementary School GMP Drawings Complete	0	0%			Nov-08-18		920	New Elementary School GMP Drawings Complete
A2120	New Elementary School Bid Documents	40	0%	Nov-08-18		Jan-08-19		911	New Elementary School Bid Documents
A2130	New Elementary School GMP Review of Provisional	10	0%	Nov-09-18		Nov-26-18		930	New Elementary School GMP Review of Provisional Drawings
A2410	New Elementary School Complete GMP Document	20	0%	Nov-09-18		Dec-10-18		920	New Elementary School Complete GMP Documents
A2140	New Elementary School GMP Estimate	15	0%	Nov-12-18		Dec-04-18		933	New Elementary School GMP Estimate
A2160	New Elementary School GMP Phase Submission	10	0%	Nov-26-18		Dec-10-18		930	New Elementary School GMP Phase Submission
A2390	New Elementary School Submit GMP for Review	5	0%	Dec-10-18		Dec-17-18		920	New Elementary School Submit GMP for Review
A2420	New Elementary School GMP Review Meeting	1	0%	Dec-17-18		Dec-18-18		920	New Elementary School GMP Review Meeting
A2430	New Elementary School GMP Correctors/Finaliza	3	0%	Dec-18-18		Dec-21-18		920	New Elementary School Correctors/Finalization
A2440	New Elementary School Submit Final GMP	1	0%	Dec-21-18		Dec-24-18		920	New Elementary School Submit Final GMP
A2400	New Elementary School GMP Execution	5	0%	Dec-24-18		Jan-02-19		920	New Elementary School GMP Execution
A2170	New Elementary School GMP Reconciliation	1	0%	Feb-15-19		Feb-15-19*		882	New Elementary School GMP Reconciliation
A2180	New Elementary School Bid Documents Complete	0	0%			Feb-15-19		882	New Elementary School Bid Documents Complete
A2190	New Elementary School Bid Doc Review of Provisi	5	0%	Feb-18-19		Feb-22-19		882	New Elementary School Bid Doc Review of Provisional Drawings
A3540	New Elementary School Issue Bid Documents	5	0%	Feb-18-19		Feb-22-19		882	New Elementary School Issue Bid Documents
A2200	New Elementary School Bidding Period	15	0%	Feb-25-19		Mar-15-19		882	New Elementary School Bidding Period
A2210	New Elementary School Bids Due	0	0%			Mar-15-19		882	New Elementary School Bids Due

Southwest Licking School District Preconstruction

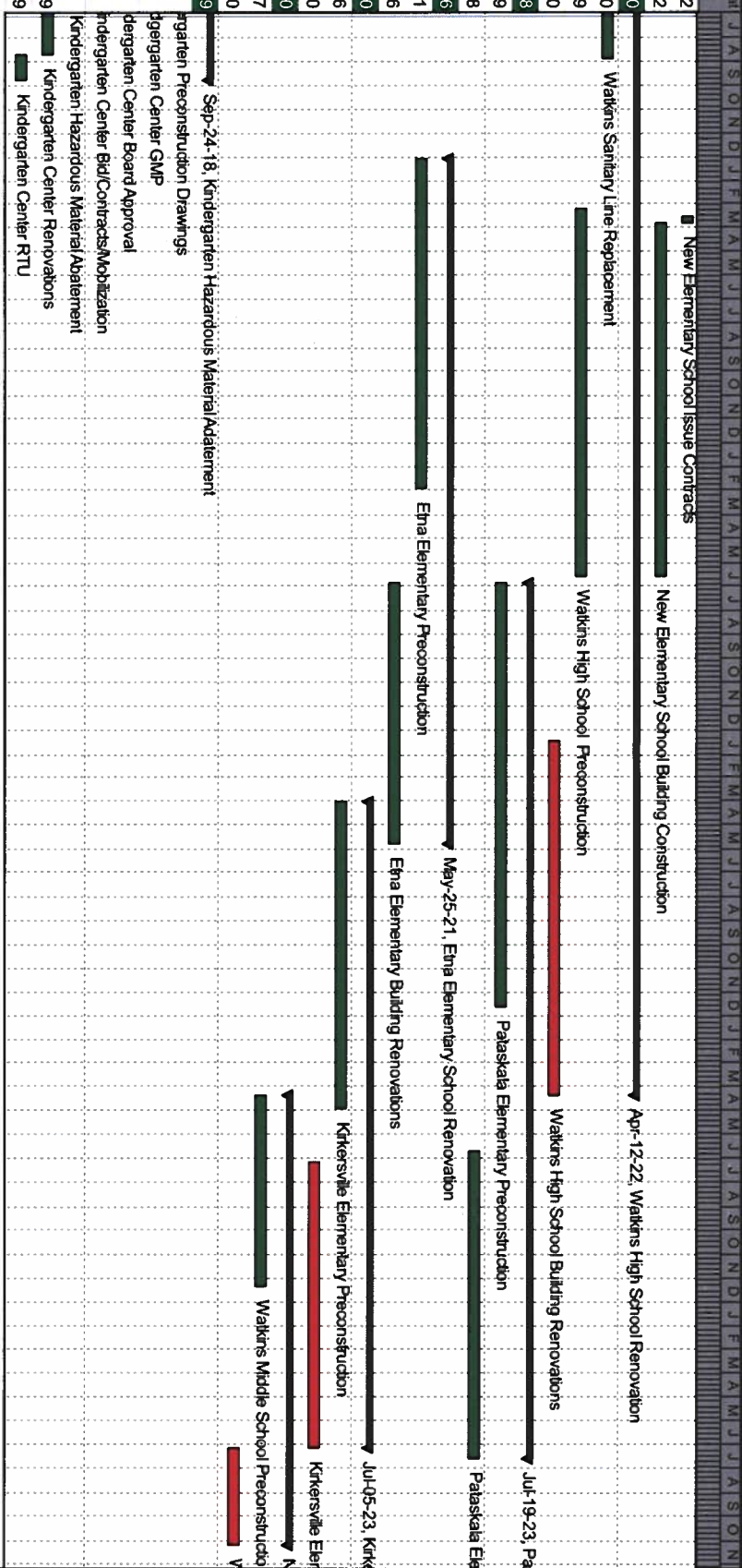
Nov-01-17
Nov-07-23
data date: Jul-06-18
page 2 of 3

- Actual Work
- Remaining Work
- Critical Remaining Work
- Milestone
- Summary

Southwest Licking School District Preconstruction
Schedule Update
Date Jul-06-18



Activity ID	Activity Name	OO	Activity %	Start	Actual Start	Finish	Actual Finish	Total Pool
A0550	New Elementary School Issue Contracts	7	0%	Mar-18-19		Mar-26-19		882
A1060	New Elementary School Building Construction	322	0%	Mar-27-19		Jun-18-20		882
	Watkins High School Renovation	996	0%	Jun-04-18 A	Jun-04-18	Apr-12-22		410
A1100	Watkins Sanitary Line Replacement	45	15%	Jun-04-18 A	Jun-04-18	Aug-29-18		1350
A1080	Watkins High School Preconstruction	334	0%	Mar-08-19		Jun-18-20		149
A1090	Watkins High School Building Renovations	324	0%	Jan-13-21		Apr-12-22		0
	Pataskala Elementary/School Renovation	799	0%	Jun-26-20		Jul-19-23		78
A1140	Pataskala Elementary Preconstruction	387	0%	Jun-26-20*		Dec-20-21		209
A1150	Pataskala Elementary Building Renovations	281	0%	Jun-22-20*		Jul-19-23		78
	Etha Elementary School Renovation	625	0%	Jan-02-19*		May-25-21		46
A1110	Etha Elementary Preconstruction	302	0%	Jan-02-19*		Feb-27-20		131
A1120	Etha Elementary Building Renovations	238	0%	Jun-26-20*		May-25-21		46
	Kirkersville Elementary School Renovation	588	0%	Apr-02-21		Jul-05-23		0
A1170	Kirkersville Elementary Preconstruction	281	0%	Apr-02-21		Apr-29-22		46
A1180	Kirkersville Elementary Building Renovations	261	0%	Jul-05-22		Jul-05-23		0
	Watkins Middle School Abatement & Demolition	410	0%	Apr-12-22		Nov-07-23		0
A1200	Watkins Middle School Preconstruction	174	0%	Apr-12-22		Dec-12-22		147
A1210	Watkins Middle School Hazardous Material Abaten	89	0%	Jul-05-23*		Nov-07-23		0
	Kindergarten Hazardous Material Abatement	117	0%	Apr-13-18 A	Apr-13-18	Sep-24-18		1349
A1230	Kindergarten Preconstruction Drawings	64	100%	Apr-13-18 A	Apr-13-18	Apr-27-18 A	Apr-27-18	
A1250	Kindergarten Center GMP	29	100%	Apr-28-18 A	Apr-28-18	May-15-18 A	May-15-18	
A1260	Kindergarten Center Board Approval	1	100%	May-17-18 A	May-17-1	May-17-18 A	May-17-18	
A1270	Kindergarten Center Bldg/Contracts/Mobilization	35	100%	May-18-18 A	May-18-1	Jun-01-18 A	Jun-01-18	
A1240	Kindergarten Hazardous Material Abatement	15	100%	Jun-04-18 A	Jun-04-18	Jun-18-18 A	Jun-18-18	
A1280	Kindergarten Center Renovations	77	55%	Jun-11-18 A	Jun-11-18	Aug-23-18		1349
A1290	Kindergarten Center RTU	21	0%	Aug-23-18		Sep-24-18		1349



- Actual Work
- Remaining Work
- Critical Remaining Work
- Milestone
- Summary

Nov-01-17
 Nov-07-23
 data date: Jul-06-18
 page 3 of 3

Southwest Licking School District Preconstruction
 Schedule Update
 Date Jul-06-18

