



(PICTORIAL REPRESENTATION)

Projects:

Southwest Licking Local Schools

Site Improvements Package

New 4-5 Elementary School

New High School

Etna Elementary Renovations

Watkins High School to Middle School Renovations



Monthly Status Report #29
November 2021

*Southwest Licking Local Schools
New High School, New 4-5 Elementary, Etna Elementary, & Watkins HS to MS
Progress Report No. 29, November 18th, 2021*

Progress Report No. 29
For the Period Ending November 18th, 2021
Southwest Licking Local Schools

***New High School, New 4-5 Elementary, Etna
Elementary Renovations, & Watkins HS to MS
Renovations***

Kandee Engle
Debra Moore
Catherine Spindler
John Vincent
Roger Zeune
Kasey Perkins
Richard Jones
Robert Jennell
Nathan Jones
Eric Baltzell
Curt South
Brian Wolf
Ted Musielewicz
Julie Taggart
Michael Maxwell

Southwest Licking Local Schools
Southwest Licking Local Schools
Southwest Licking Local Schools
Southwest Licking Local Schools
Southwest Licking Local Schools
Southwest Licking Local Schools
Southwest Licking Local Schools
Southwest Licking Local Schools Consultant
Ohio Facilities Construction Commission
Garmann-Miller Architects Engineers
Garmann-Miller Architects Engineers
Garmann-Miller Architects Engineers
Garmann-Miller Architects Engineers
Hill International
Hill International

Construction Manager:
Robertson Construction Services, Inc.
1801 Thornwood Drive
Heath, Ohio 43056

Architects:
Garmann-Miller Architects Engineers
38 South Lincoln Drive
P.O. Box 71
Minster, Ohio 45865

Owner's Agent:
Hill International, Inc.
2 Easton Oval #110
Columbus, Ohio 43219



Southwest Licking Local Schools
New High School, New 4-5 Elementary, Etna Elementary, & Watkins HS to MS
Progress Report No. 29, November 18th, 2021

Table of Contents

PROJECT CONTACTS.....	3
PROJECT FLOOR PLANS	4
Etna Elementary School	4
New 9-12 High School.....	5
Watkins HS to MS Renovation	6
EXECUTIVE SUMMARY	7
PROJECT BUDGETS	9
Owner Contingency	9
CMR Contingency	11
PROJECT SCHEDULE.....	13
Site Improvements Package.....	13
New High School.....	14
Etna Elementary.....	15
Watkins HS to MS Renovation	16
PROJECT DOCUMENTATION.....	17
Etna Elementary.....	17
Watkins HS to MS Renovation	18
QUALITY CONTROL	19
Etna Elementary Renovation	19
Watkins HS to MS Renovation	21
SAFETY.....	22
Etna Elementary.....	22
Watkins HS to MS Renovations.....	23
PROGRESS PHOTOS.....	24
Etna Elementary.....	24
Watkins HS to MS Renovation	26



***Southwest Licking Local Schools
New High School, New 4-5 Elementary, Etna Elementary, & Watkins HS to MS
Progress Report No. 29, November 18th, 2021***

PROJECT CONTACTS

All Projects

Eric Baltzell, Garmann-Miller (419) 628-4240
Clay Keith, Robertson (614) 374-4857
Jessica Hall, Robertson (740) 814-6742

Site Improvements Package

Shira Elder, Garmann-Miller (419) 628-4240
Mark Keith, Robertson (740) 404-1805
Kevin Mohler, Robertson (740) 503-7218

New 4-5 Elementary School

Curt South, Garmann-Miller (419) 628-4240
Clyde McIntire, Robertson (740) 404-0111
AJ Saunders, Robertson (740) 348-6932

New High School

Brian Wolf, Garmann-Miller (419) 628-4240
Mark Keith, Robertson (740) 404-1805
Kevin Mohler, Robertson (740) 503-7218

Etna Elementary Renovation

Curt South, Garmann-Miller (419) 628-4240
Clyde McIntire, Robertson (740) 404-0111
AJ Saunders, Robertson (740) 348-6932

Watkins Renovation

Ted Musielewicz, Garmann-Miller (419) 628-4240
Mark Keith, Robertson (740) 404-1805
Kevin Mohler, Robertson (740) 503-7218



September 15, 2019 Drone Photo

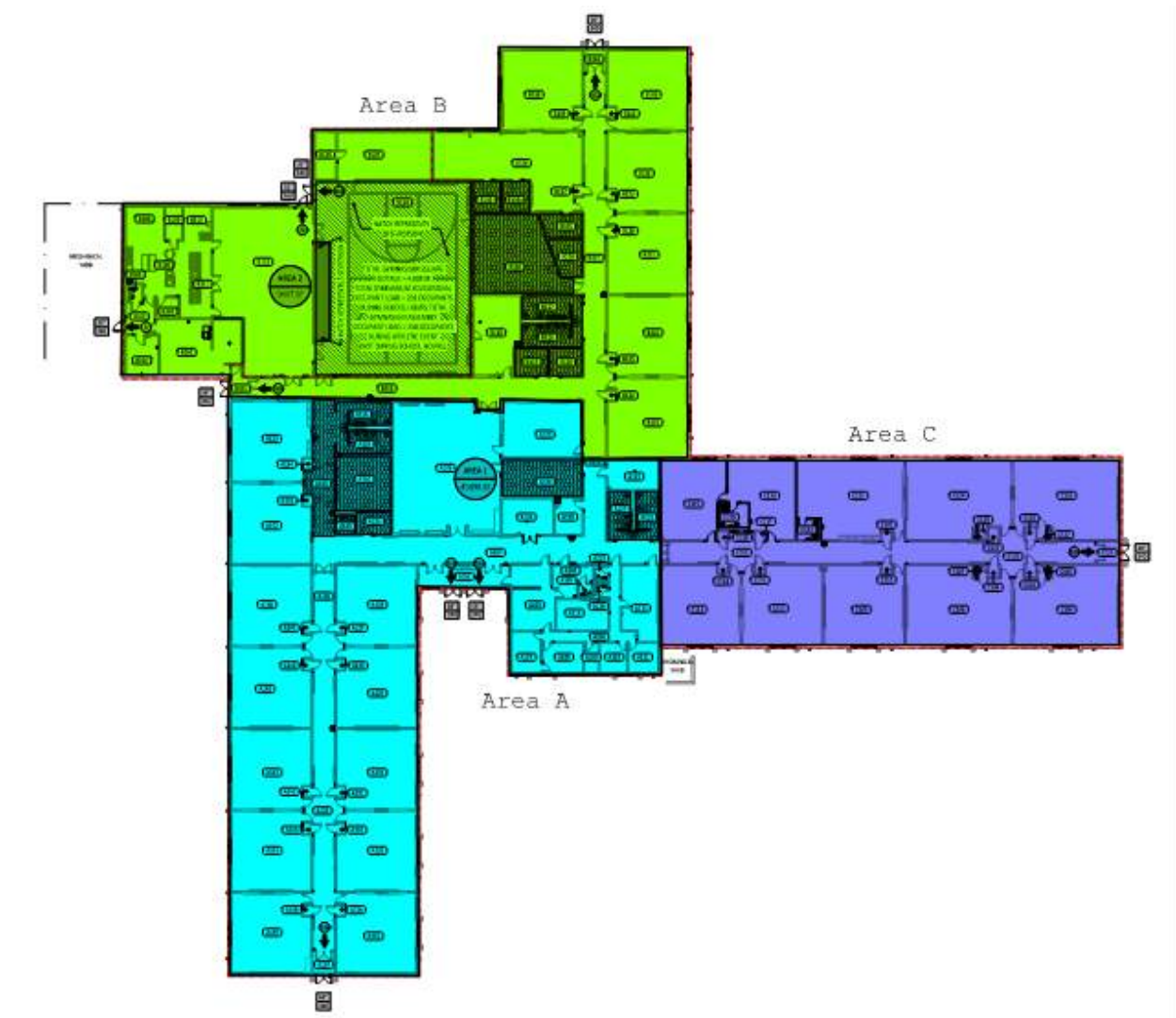


September 15, 2020 Drone Photo



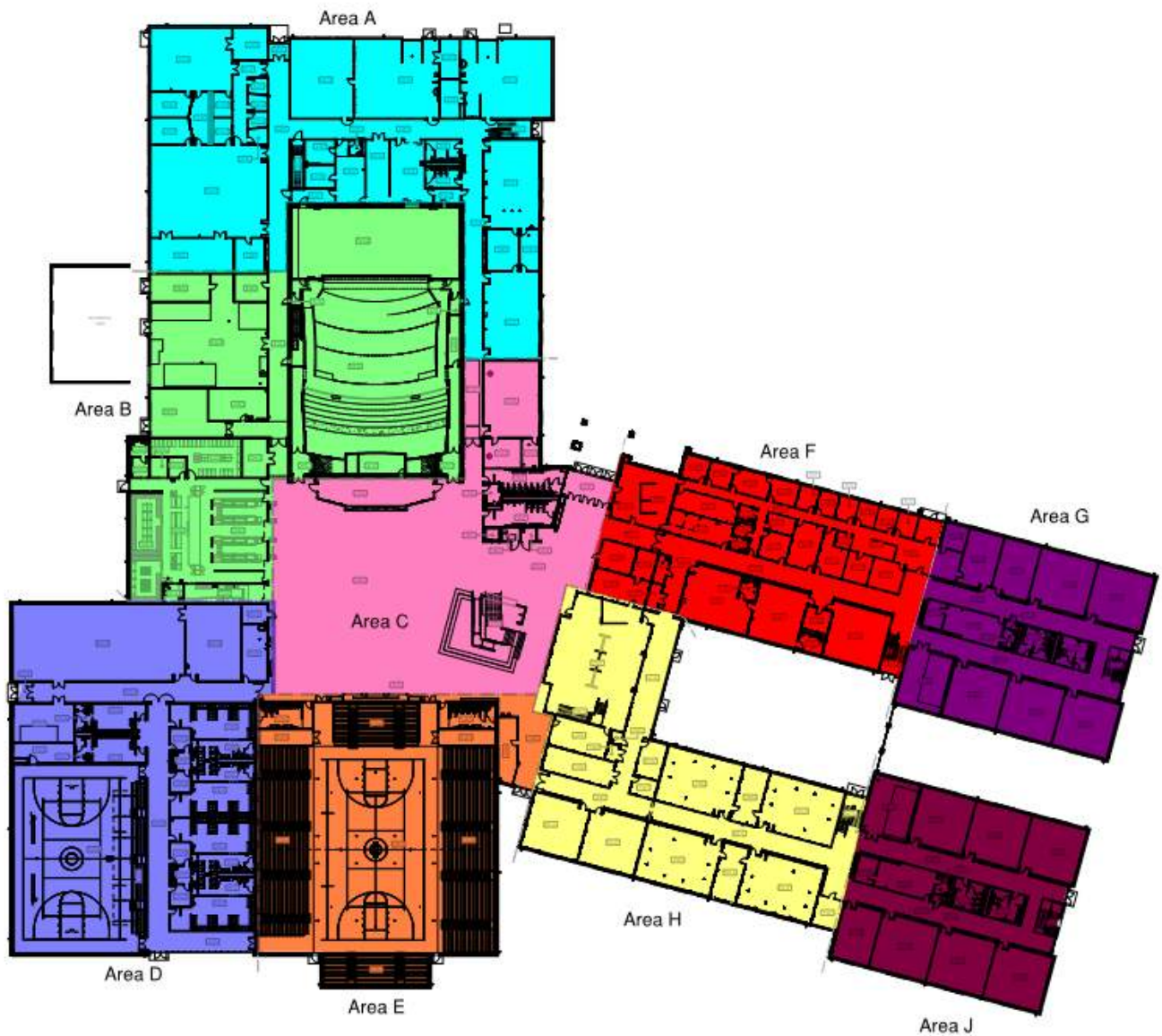
*Southwest Licking Local Schools
New High School, New 4-5 Elementary, Etna Elementary, & Watkins HS to MS
Progress Report No. 29, November 18th, 2021*

PROJECT FLOOR PLANS
Etna Elementary School



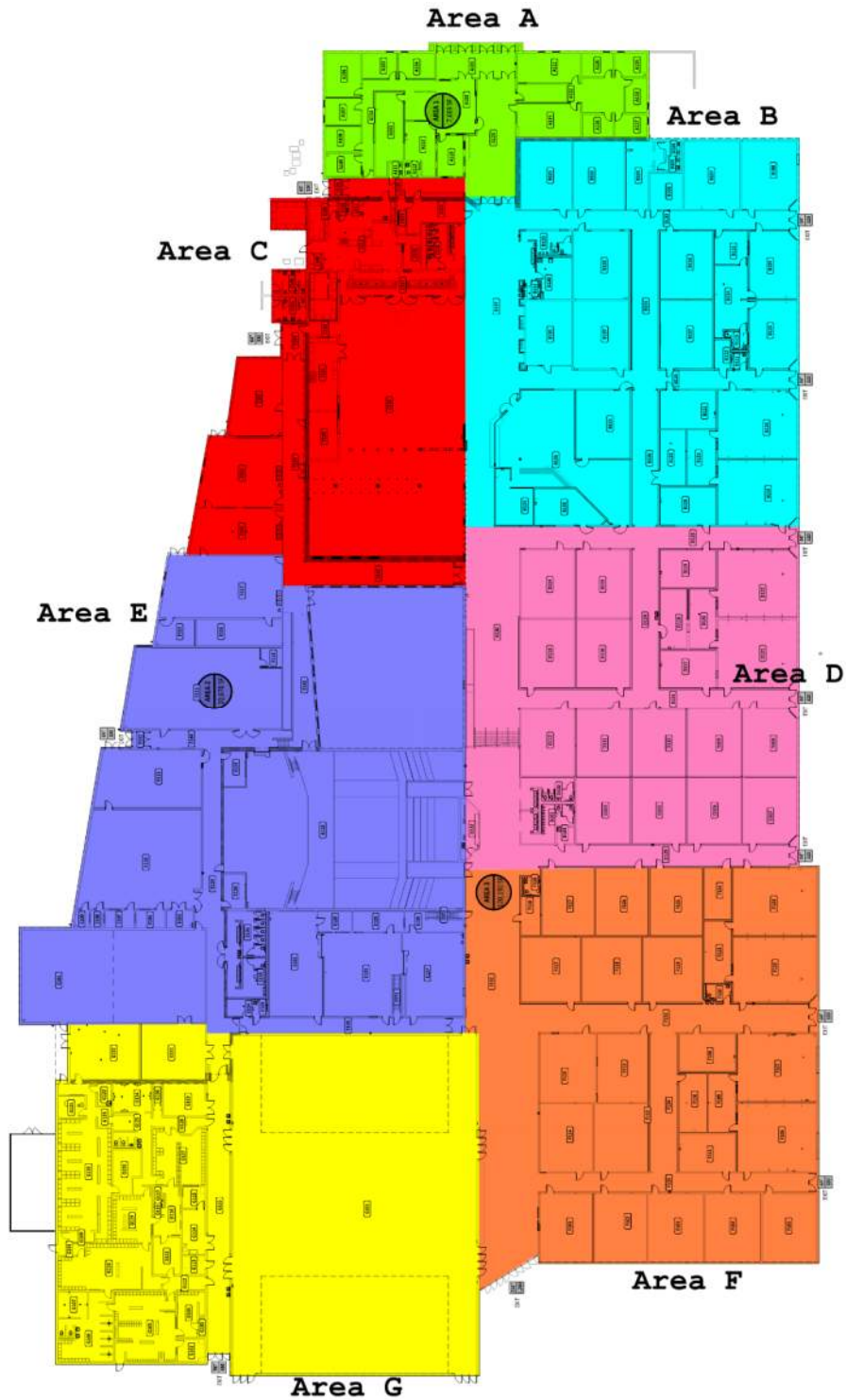
*Southwest Licking Local Schools
New High School, New 4-5 Elementary, Etna Elementary, & Watkins HS to MS
Progress Report No. 29, November 18th, 2021*

PROJECT FLOOR PLANS
New 9-12 High School



*Southwest Licking Local Schools
New High School, New 4-5 Elementary, Etna Elementary, & Watkins HS to MS
Progress Report No. 29, November 18th, 2021*

**PROJECT FLOOR PLANS
Watkins HS to MS Renovation**



Southwest Licking Local Schools
New High School, New 4-5 Elementary, Etna Elementary, & Watkins HS to MS
Progress Report No. 29, November 18th, 2021

EXECUTIVE SUMMARY

This report has been prepared to provide a project update for the Southwest Licking New High School, the Etna Elementary Renovations, and the Watkins High School to Middle School Renovation. It is intended to provide a summary review of the status of the project through November 18th, 2021.

UPCOMING MEETINGS:

December 8th at 10:00 am – Core Team Meeting (Once a Month)

November 23rd 2:00 pm – Etna Elementary School Renovation Progress Meeting (Every Tuesday)

December 9th at 11:00 am – Watkins Renovation Progress Meeting (Every Other Thursday)

Etna Elementary Renovations

CALENDAR DAYS TO COMPLETE

Substantial Completion (Nov 28, 2021) 10

Watkins HS to MS Renovation

CALENDAR DAYS TO COMPLETE

Substantial Completion (July 18, 2022) 242

SCHEDULE & WORK COMPLETED

- Area C
 - Electrical Wall Devices Install 100%
 - Technology Wall Devices Install 100%
 - Signage Install 100%
 - Terrazzo Tile Replacement 100%
 - Loose Furnishings Install 95%
 - CM Punch & Corrections 100%
 - Final Cleaning 75%
- Area A
 - Final Coat Paint 100%
 - Electrical Wall Devices Install 100%
 - Technology Wall Devices Install 100%
 - Signage Install 100%
 - Loose Furnishings Install 95%
 - CM Punch & Corrections 100%
 - Final Cleaning 75%
- Area B
 - Final Coat Paint 100%
 - Drop Ceiling Tile 100%
 - Electrical Wall Devices Install 100%
 - Technology Wall Devices Install 100%
 - Signage Install 100%
 - Terrazzo Tile Replacement 100%
 - Loose Furnishings Install 95%
 - CM Punch & Corrections 100%
 - Final Cleaning 75%
- Site Work

SCHEDULE & WORK COMPLETED

- Area F
 - Piping Insulation 30%
 - Finish Drywall 90%
 - HVAC Duct Branches 100%
 - Setting Door Frames 90%
 - Hang/ Finish Soffits 90%
- Area D
 - HVAC Hydronic Piping 90%
 - Plumbing Insulation 50%
 - Finish Drywall 40%
 - Door Frame Install 90%
 - Hang/ Finish Soffits 20%
 - Electrical Feeder Conduit 10%
- Area C
 - Underground Sanitary 75%
 - Masonry Infills 80%
- Area B
 - HVAC Hydronic Piping 70%
 - Hang Drywall 70%
 - Finish Drywall 20%
 - Door Frame Install 90%
 - Above Ground Sanitary Rough-In 10%
- Area E
 - HVAC Piping 60%
 - Fire Alarm Conduit 40%
- Area A
 - Fire Alarm Conduit 50%



Southwest Licking Local Schools
New High School, New 4-5 Elementary, Etna Elementary, & Watkins HS to MS
Progress Report No. 29, November 18th, 2021

- Site Lighting 100%
- Site Grading 90%
- Cedar Soffit Repair 100%
- Asphalt Paving 50%
- Playground Equipment Install 100%

CURRENT ISSUES

- DAS test failed. A DAS system will need to be added to the project.
- DAS System will take 4 weeks to get materials and 2 weeks to install
- Dark Fiber Loop Install not complete will impact the functioning of the phone system and final set up of data systems.
- Some loose furnishing items are back ordered (rocking chairs) or arrived damaged (teachers desks) and need to be replaced.
- Basketball backboards arrived damaged and need to be replaced.

- Electrical Stud Rough-In 80%
- Overhead and IN-Wall Water 20%
- Above Ground Sanitary Rough 10%
- Area G
 - HVAC Demolition 50%
- Roofing
 - Continue Roofing Areas F/D 50%

CURRENT ISSUES

- Establishing Water Meter pit Size and securing Final Permit, pursuant available design pressures and water department requirements
- Generator Lead time moved out 6 months due to component availability
- Fiber lead time 102 weeks/ Substitution request in review to mitigate

New High School

CALENDAR DAYS TO COMPLETE

Final Occupancy Achieved on July 2, 2021

SCHEDULE & WORK COMPLETED

- Owner Proposal Requests for Additional Work
- Complete Detention Pond work/ seeding – weather contingent.
- Completion of final punch list items, HS Teacher Correction Items, Owner Walk-Through Concerns

CURRENT ISSUES

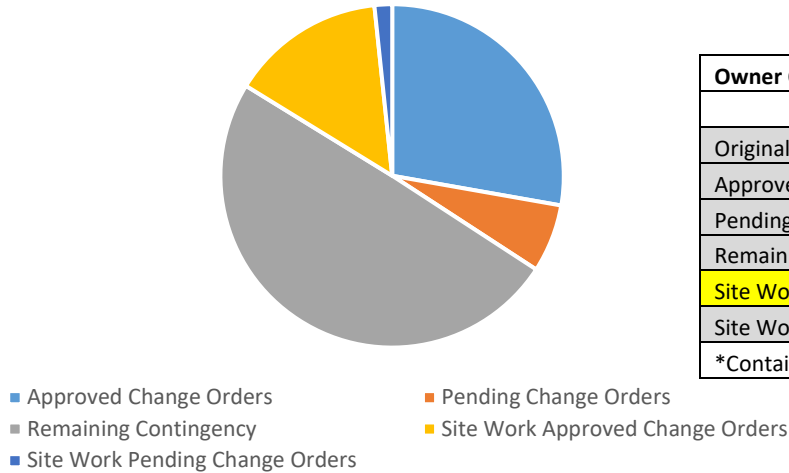
- Market Conditions/ Material delivery issues to complete or correct remaining punch items and new PR work.



Southwest Licking Local Schools
New High School, New 4-5 Elementary, Etna Elementary, & Watkins HS to MS
Progress Report No. 29, November 18th, 2021

PROJECT BUDGETS
Owner Contingency

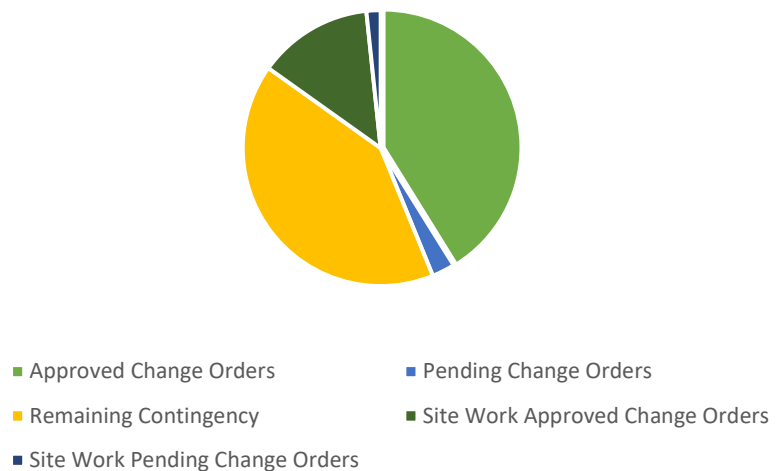
New 4-5 Elementary School
Owner Contingency Usage



Owner Contingency	
	Elementary School
Original Amount	\$484,786.40
Approved Change Orders	\$160,737.63
Pending Change Orders*	\$37,009.03
Remaining Contingency	\$287,039.74
Site Work Approved Change Orders	\$84,338.28
Site Work Pending Change Orders	\$9,551.63
*Contains the Technology Equipment overage	

New High School
Owner Contingency Usage

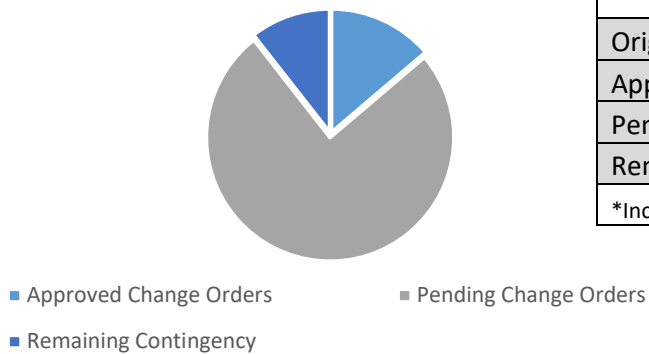
Owner Contingency	
	High School
Original Amount	\$1,304,165.46
Approved Change Orders	\$632,420.82
Pending Change Orders	\$41,059.26
Remaining Contingency	\$630,685.38
Site Work Approved Change Orders	\$206,483.37
Site Work Pending Change Orders	\$26,019.95



Southwest Licking Local Schools
New High School, New 4-5 Elementary, Etna Elementary, & Watkins HS to MS
Progress Report No. 29, November 18th, 2021

PROJECT BUDGETS
Owner Contingency

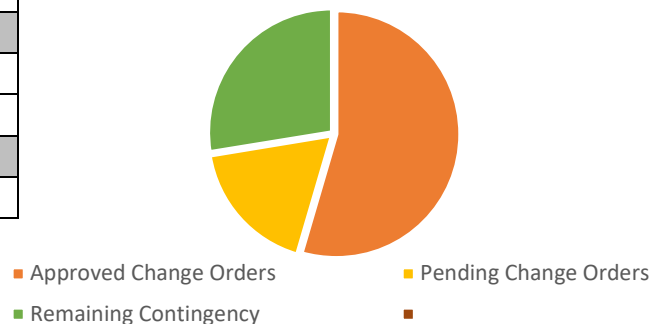
Etna Elementary Renovation
Owner Contingency Usage



Owner Contingency	
	Etna
Original Amount	\$158,924.60
Approved Change Orders*	\$872,682.33
Pending Change Orders	\$121,799.23
Remaining Contingency	\$(835,556.96)
*Includes Accepted Alternates (\$ 607,215)	

Owner Contingency	
	Watkins
Original Amount	\$581,626.79
Approved Change Orders	\$190,666.79
Pending Change Orders*	\$293,954.63
Remaining Contingency	\$97,005.37
*Includes Accepted Alternates (\$ 60,7215)	

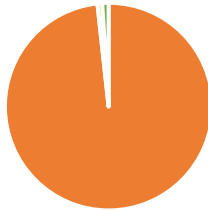
Watkins HS to MS Renovation
Owner Contingency Usage



Southwest Licking Local Schools
New High School, New 4-5 Elementary, Etna Elementary, & Watkins HS to MS
Progress Report No. 29, November 18th, 2021

PROJECT BUDGETS
CMR Contingency

Site Improvements Package
CMR Contingency Usage

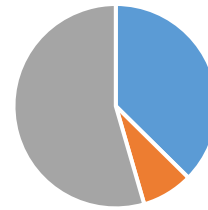


■ Approved Change Orders ■ Pending Change Orders
■ Remaining Contingency

CMR Contingency	
	Site Work
Original Amount	\$84,760.00
Approved Change Orders	\$83,265.56
Pending Change Orders	\$646.40
Remaining Contingency	\$848.04

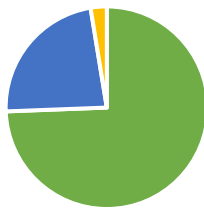
CMR Contingency	
	Elementary School
Original Amount	\$343,225.00
Approved Change Orders	\$128,245.37
Pending Change Orders	\$27,954.86
Remaining Contingency	\$187,024.77

New 4-5 Elementary School
CMR Contingency Usage



■ Approved Change Orders ■ Pending Change Orders
■ Remaining Contingency

New High School
CMR Contingency Usage



■ Approved Change Orders ■ Pending Change Orders
■ Remaining Contingency

CMR Contingency	
	High School
Original Amount	\$665,549.00
Approved Change Orders	\$495,445.08
Pending Change Orders	\$152,804.18
Remaining Contingency	\$17,299.74



Southwest Licking Local Schools
New High School, New 4-5 Elementary, Etna Elementary, & Watkins HS to MS
Progress Report No. 29, November 18th, 2021

PROJECT BUDGETS
CMR Contingency

Etna Elementary
CMR Contingency Usage



- Approved Change Orders ■ Pending Change Orders
- Remaining Contingency

CMR Contingency	
	High School
Original Amount	\$67,895.09
Approved Change Orders	\$27,981.43
Pending Change Orders	\$4,551.21
Remaining Contingency	\$35,362.45

Watkins HS to MS Renovations
CMR Contingency Usage



- Approved Change Orders ■ Pending Change Orders
- Remaining Contingency

CMR Contingency	
	High School
Original Amount	\$272,395.13
Approved Change Orders	\$-
Pending Change Orders	\$-
Remaining Contingency	\$272,395.13



*Southwest Licking Local Schools
New High School, New 4-5 Elementary, Etna Elementary, & Watkins HS to MS
Progress Report No. 29, November 18th, 2021*

***PROJECT SCHEDULE
Site Improvements Package***

RCS Internal Verification Dates

<u>SCHEDULE FROM BID</u>	<u>SCHEDULED</u>	<u>STATUS</u>
<i>Notice to Proceed</i>	<i>February 28, 2019</i>	<i>Complete</i>
<i>Build Building Pad – Elementary School</i>	<i>June 10, 2019</i>	<i>Complete</i>
<i>Build Building Pad – High School</i>	<i>June 26, 2019</i>	<i>Complete</i>
<i>Substantial Completion of Elementary School</i>	<i>November 19, 2020</i>	<i>Complete</i>
<i>Substantial Completion of All Work (less Items Below)</i>	<i>June 7, 2021</i>	<i>Complete</i>
<i>Spread Topsoil, Reseed, and Top Coat of Asphalt</i>	<i>July 7, 2021</i>	<i>Complete</i>

Schedule Two Week Look Ahead

- Adjust mounded islands, once revised direction provided by AE to address areas of ponding. (This is PR work and is currently being priced, to be scheduled for exterior concrete at mounds)
- Completed final detention area work – Will have to wait for seed growth in the bottom of the pond before drainage piping can be installed.
- Complete all remaining site punch list items updated/ issued by AE 10/7/21



*Southwest Licking Local Schools
New High School, New 4-5 Elementary, Etna Elementary, & Watkins HS to MS
Progress Report No. 29, November 18th, 2021*

PROJECT SCHEDULE
New High School

RCS Internal Verification Dates

<u>MILESTONE SCHEDULE FROM BID</u>	<u>SCHEDULED</u>	<u>STATUS</u>
<i>Notice to Proceed</i>	<i>May 24, 2019</i>	<i>Complete</i>
<i>Substantial Completion of All Work (less items below)</i>	<i>June 7, 2021</i>	<i>Complete</i>
<i>Spread Topsoil, Reseed, and Top Coat of Asphalt</i>	<i>July 7, 2021</i>	<i>Complete</i>

Schedule Two Week Look Ahead

Testing and Balancing

- Final Air and Water Balancing Report corrects completed by HVAC Contractor.

Proposal Requests

- Schedule added work as Change orders are executed

Building Envelope & Exterior

- Complete remaining open punch list items interior and exterior



*Southwest Licking Local Schools
New High School, New 4-5 Elementary, Etna Elementary, & Watkins HS to MS
Progress Report No. 29, November 18th, 2021*

PROJECT SCHEDULE
Etna Elementary

RCS Internal Verification Dates

<u>SCHEDULE FROM BID</u>	<u>SCHEDULED</u>	<u>STATUS</u>
<i>Notice to Proceed</i>	<i>November 24, 2020</i>	<i>Complete</i>
<i>Substantial Completion of Elementary School</i>	<i>November 28, 2021</i>	

Schedule Two Week Look Ahead

Area A

- Perform Final Cleaning
- A&E/Owner Punch & Corrections

Area B

- Perform Final Cleaning
- A&E/Owner Punch & Corrections

Area C

- Perform Final Cleaning
- A&E/Owner Punch & Corrections

Sitework

- Asphalt Paving
- Back Asphalt with Topsoil
- Install Chain Link Fence
- Install Soft Playground Surface
- Final Seeding



*Southwest Licking Local Schools
New High School, New 4-5 Elementary, Etna Elementary, & Watkins HS to MS
Progress Report No. 29, November 18th, 2021*

PROJECT SCHEDULE
Watkins HS to MS Renovation

RCS Internal Verification Dates

SCHEDULE FROM BID	SCHEDULED	STATUS
<i>Notice to Proceed</i>	<i>March 30th, 2021</i>	<i>March 30th, 2021</i>
<i>Construction Start</i>	<i>June 1st, 2021</i>	<i>June 1, 2021</i>
<i>Substantial Completion</i>	<i>July 18th, 2021</i>	<i>(Alternate Contingent)</i>

Schedule Two Week Look Ahead

Area F

- Complete HVAC Duct Branches
- Continue Overhead/ Inwall Domestic Water
- Complete Door Frames
- Start Fire Protection Piping
- Start Cable Tray Install
- Start Alt 27 Duct Cleaning

Area D

- Start Fire Protection Piping
- Complete HVAC Piping
- Continue Plumbing Insulation
- Finish Drywall
- Continue Electrical Feeder Conduit

Area B

- Finish Drywall Walls
- Continue above ground sanitary rough
- Complete Door Frame Install

Area A

- Complete Fire Alarm Conduit
- Complete Electrical Stud Wall Rough
- Continue Above Ground Sanitary Rough
- Continue Door Frame Install

Area C

- Complete underground Sanitary
- Install Structural Steel Shoring

Area E

- Complete remaining Underground Plumbing work

Area G

- Start Alternate #05 Masonry Infill
- Begin Alt 28 Gym Floor Demolition

Roofing/Exterior

- Continue roofing area F-D
- Water Line Install (Permit Contingent)
- Begin Alt 14 Pole Lighting Demo/ Underground



Southwest Licking Local Schools
New High School, New 4-5 Elementary, Etna Elementary, & Watkins HS to MS
Progress Report No. 29, November 18th, 2021

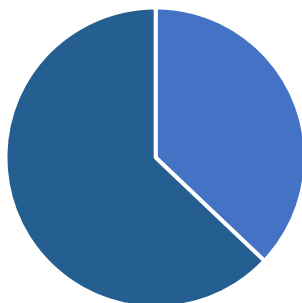
PROJECT DOCUMENTATION
Etna Elementary

The timely flow of all information is critical to any construction project. Specifically, Submittals (Shop Drawings) and Request for Interpretation are two critical areas that need to be closely monitored to assure a lack of information does not impede the project schedule. The following is a brief summary of the current Submittal and RFI status and is intended to highlight critical items to all parties.

The following items may present potential concerns to the project schedule:

<u>Submittal/RFI</u>	<u>Responsibility</u>	<u>Schedule Concern</u>
DAS System	GMAE	4 Weeks to Get Material & 2 Weeks to Install

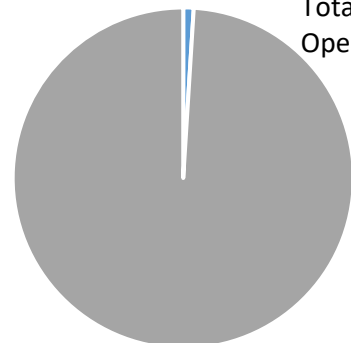
**Etna Elementary
Submittals**



Total Submittals: 561
 Approved: 0
 Pending: 0
 Outstanding: 353
 Closeout: 208

■ Approved Submittals ■ Pending Submittals
 ■ Closeout Submittals ■ Outstanding Submittals

**Etna Elementary
Request for Information**



Total RFIs: 110
 Open RFIs: 2

■ Open RFIs ■ Closed RFIs



Southwest Licking Local Schools
New High School, New 4-5 Elementary, Etna Elementary, & Watkins HS to MS
Progress Report No. 29, November 18th, 2021

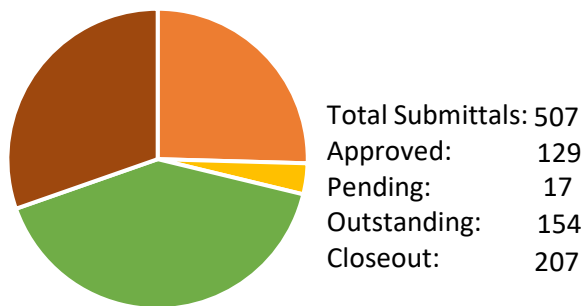
PROJECT DOCUMENTATION
Watkins HS to MS Renovation

The timely flow of all information is critical to any construction project. Specifically, Submittals (Shop Drawings) and Request for Interpretation are two critical areas that need to be closely monitored to assure a lack of information does not impede the project schedule. The following is a brief summary of the current Submittal and RFI status and is intended to highlight critical items to all parties.

The following items may present potential concerns to the project schedule:

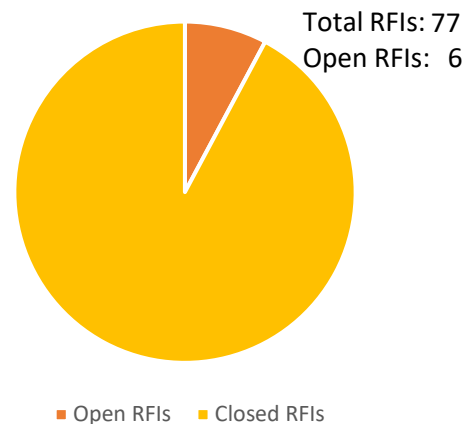
<u>Submittal/RFI</u>	<u>Responsibility</u>	<u>Schedule Concern</u>
Generator		Manufacturer Lead time extending 6 months due to market conditions.
RFI #60 – Meter Pit	SWL Water District/ GMAE	Finalize submittal for issuance of Water Permit
Technology Fiber	GMAE	Substitution due to manufacturer lead time of 2 years on basis of design/ approved submission

Watkins HS to MS Renovations
Submittals



■ Approved Submittals ■ Pending Submittals
■ Closeout Submittals ■ Outstanding Submittals

Watkins HS to MS Renovations
Request for Information



■ Open RFIs ■ Closed RFIs



***Southwest Licking Local Schools
New High School, New 4-5 Elementary, Etna Elementary, & Watkins HS to MS
Progress Report No. 29, November 18th, 2021***

***QUALITY CONTROL
Etna Elementary Renovation***

The monitoring of safety and quality of work is an important issue, which Robertson Construction Services and the Subcontractors take very seriously. Robertson continually monitors the Subcontractor's safety practices and quality of work via on-site inspections.

Quality Control

We are reviewing all of the "work in place" to verify it was installed as designed. Any discrepancies from the Contract Documents are listed in field reports and distributed to the proper Subcontractor for corrections. We also discuss the items in our weekly subcontractor meetings to ensure each concern has proper closure. The entire Design Team has taken a thorough and proactive approach to items. Robertson continues to monitor the reports from Geotechnical Consultants Inc. Corrections are being made in response to these reports.

Additionally, pre-installation meetings are being scheduled with the Architect and appropriate subcontractors to ensure the work is consistent with the contract specifications and on par with quality standards.

The following Pre-Installation Meetings have occurred:

- 084313-Aluminum-Framed Storefronts
- 088000-Glazing
- 093000-Tiling
- 096500-Resilient Flooring
- 270000-Technology Kick-Off Meeting
- 087100-Door Hardware
- 123550-Educational Casework
- 312200-Grading



***Southwest Licking Local Schools
New High School, New 4-5 Elementary, Etna Elementary, & Watkins HS to MS
Progress Report No. 29, November 18th, 2021***

***QUALITY CONTROL
Watkins HS to MS Renovation***

The monitoring of safety and quality of work is an important issue, which Robertson Construction Services and the Subcontractors take very seriously. Robertson continually monitors the Subcontractor's safety practices and quality of work via on-site inspections.

Quality Control

We are reviewing all of the "work in place" to verify it was installed as designed. Any discrepancies from the Contract Documents are listed in field reports and distributed to the proper Subcontractor for corrections. We also discuss the items in our weekly subcontractor meetings to ensure each concern has proper closure. The entire Design Team has taken a thorough and proactive approach to items. Robertson continues to monitor the reports from Geotechnical Consultants Inc. Corrections are being made in response to these reports.

Additionally, pre-installation meetings are being scheduled with the Architect and appropriate subcontractors to ensure the work is consistent with the contract specifications and on par with quality standards.

The Following Pre-Installation Meetings are to be held per the Specifications:

- 076100 – Sheet Metal Roofing
- 076200 – Sheet Metal Flashing and Trim
- 081116 – Aluminum Doors
- 084313 – Aluminum-Framed Storefronts
- 087100 – Door Hardware
- 088000 – Glazing
- 093000 – Tiling
- 096500 – Resilient Flooring
- 122400 – Window Shades
- 123550 – Educational Casework
- 123552 – Library Casework
- 210501 – Fire Protection Materials/Methods
- 260536 – Cable Trays for Electrical Systems
- 262701 – Electrical Service Entrance
- 323223 – Segmental Freestanding & Retaining Walls
- 329219 – Seeding
- 334211 – Stormwater Gravity Piping

The following Pre-Installation Meetings have occurred or waived by A/E:

- 042000 – Unit Masonry
- 076100 – Sheet Metal Roofing
- 076200 – Sheet Metal Flashing and Trim



***Southwest Licking Local Schools
New High School, New 4-5 Elementary, Etna Elementary, & Watkins HS to MS
Progress Report No. 29, November 18th, 2021***

***SAFETY
Etna Elementary***

January 2021 – An RCS safety evaluation was conducted on January 11 and there were no safety concerns observed.

February 2021 – An RCS safety evaluation was conducted on February 10th and (2) safety concerns were documented. All safety concerns have since been abated.

April 2021 – A safety audit was conducted by Robertson Safety Manager on April 16th. There were two (2) violations that were noted and abated.

May 2021 - A safety audit was conducted by Robertson Safety Manager on May 20th. There were no safety concerns observed.

June 2021 - A safety audit was conducted by Robertson Safety Manager on June 3rd. There were two (2) violations that were noted and abated.

July 2021 - A safety audit was conducted by Robertson Safety Manager on July 7th. There was (1) violation that was noted and the issue was abated at the time of the inspection.

August 2021 - A safety audit was conducted by Robertson Safety Manager on August 10th. There were seven (7) violations that were noted and abated.

September 2021- A safety audit was conducted by Robertson Safety Manager on September 10th. There were seven (2) violations that were noted and abated.

October 2021- A safety audit was conducted by Robertson Safety Manager on October 5th. There were seven (4) violations that were noted and abated.

RCS also continues to perform monthly safety audits, and the Subcontractors quickly abate any concerns noted during the walkthrough.



***Southwest Licking Local Schools
New High School, New 4-5 Elementary, Etna Elementary, & Watkins HS to MS
Progress Report No. 29, November 18th, 2021***

***SAFETY
Watkins HS to MS Renovations***

July 2021 - A safety audit was conducted by Robertson Safety Manager on July 7th. There was one (1) violation that was noted and the issue was abated at the time of the inspection.

August 2021 - A safety audit was conducted by Robertson Safety Manager on August 10th. There were ten (10) violations that were noted and the issues were abated at the time of the inspection.

September 2021 - A safety audit was conducted by Robertson Safety Manager on September 10th. There were three (3) violations that were noted and the issues were abated at the time of the inspection

October 2021 - A safety audit was conducted by Robertson Safety Manager on October 5th. There no violations that were noted.

A safety audit was conducted by Stephen B Ogle & Associates on October 18th. There were six (6) violations that were noted and the issues were abated at the time of the inspection.

RCS also continues to perform monthly safety audits, and the Subcontractors quickly abate any concerns noted during the walkthrough.



*Southwest Licking Local Schools
New High School, New 4-5 Elementary, Etna Elementary, & Watkins HS to MS
Progress Report No. 29, November 18th, 2021*

PROGRESS PHOTOS

Etna Elementary



*Southwest Licking Local Schools
New High School, New 4-5 Elementary, Etna Elementary, & Watkins HS to MS
Progress Report No. 29, November 18th, 2021*

PROGRESS PHOTOS

Etna Elementary



*Southwest Licking Local Schools
New High School, New 4-5 Elementary, Etna Elementary, & Watkins HS to MS
Progress Report No. 29, November 18th, 2021*

***PROGRESS PHOTOS
Watkins HS to MS Renovation***

**Kitchen Concrete Cutting
November 11, 2021**



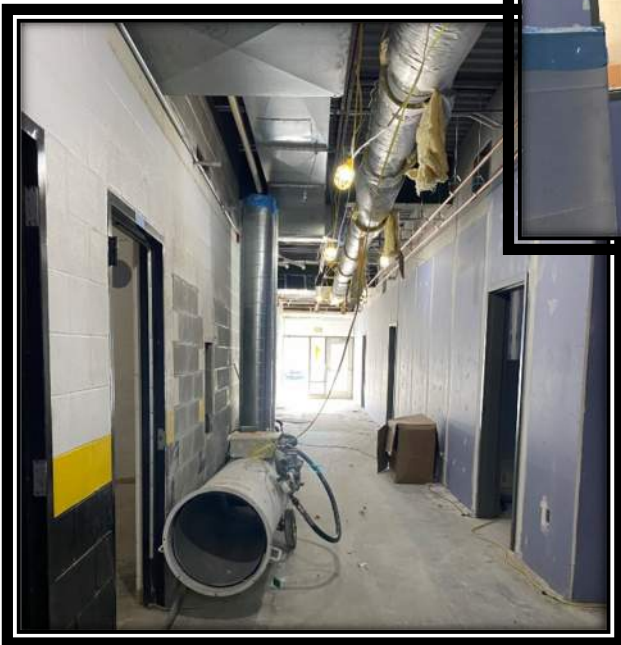
**Area A F Entrance
November 11, 2021**



**Drywall
November 11, 2021**



**Hallways Drywall
November 11, 2021**



*Southwest Licking Local Schools
New High School, New 4-5 Elementary, Etna Elementary, & Watkins HS to MS
Progress Report No. 29, November 18th, 2021*

***PROGRESS PHOTOS
Watkins HS to MS Renovation***

**Corridors
November 11, 2021**



**Prime & 1st
Coat Paint
November 11,
2021**



**In-Wall Blocking
November 11, 2021**



**Gymnasium – Bleacher Demolition
November 11, 2021**



Main Corridor

