



(PICTORIAL REPRESENTATION)

## Projects:

Southwest Licking Local Schools

Site Improvements Package

New 4-5 Elementary School

New High School

Etna Elementary Renovations

Watkins High School to Middle School Renovations



**Monthly Status Report #27**  
*August-September 2021*

*Southwest Licking Local Schools  
New High School, New 4-5 Elementary, Etna Elementary, & Watkins HS to MS  
Progress Report No. 26, July 15th, 2021*

***Progress Report No. 27***  
*For the Period Ending September 16, 2021*  
***Southwest Licking Local Schools***

***New High School, New 4-5 Elementary, Etna  
Elementary Renovations, & Watkins HS to MS  
Renovations***

Kandee Engle  
Debra Moore  
Catherine Spindler  
John Vincent  
Roger Zeune  
Kasey Perkins  
Richard Jones  
Robert Jennell  
Nathan Jones  
Eric Baltzell  
Curt South  
Brian Wolf  
Julie Taggart  
Michael Maxwell

Southwest Licking Local Schools  
Southwest Licking Local Schools  
Southwest Licking Local Schools  
Southwest Licking Local Schools  
Southwest Licking Local Schools  
Southwest Licking Local Schools  
Southwest Licking Local Schools  
Southwest Licking Local Schools Consultant  
Ohio Facilities Construction Commission  
Garmann-Miller Architects Engineers  
Garmann-Miller Architects Engineers  
Garmann-Miller Architects Engineers  
Hill International  
Hill International

**Construction Manager:**

Robertson Construction Services, Inc.  
1801 Thornwood Drive  
Heath, Ohio 43056

**Architects:**

Garmann-Miller Architects Engineers  
38 South Lincoln Drive  
P.O. Box 71  
Minster, Ohio 45865

**Owner's Agent:**

Hill International, Inc.  
2 Easton Oval #110  
Columbus, Ohio 43219



*Southwest Licking Local Schools  
New High School, New 4-5 Elementary, Etna Elementary, & Watkins HS to MS  
Progress Report No. 27, August 16th, 2021*

**Table of Contents**

PROJECT CONTACTS.....	3
PROJECT FLOOR PLANS .....	4
Etna Elementary School .....	4
New 9-12 High School.....	5
Watkins HS to MS Renovation .....	6
EXECUTIVE SUMMARY .....	7
PROJECT BUDGETS .....	9
Owner Contingency .....	9
Owner Contingency .....	10
CMR Contingency .....	11
CMR Contingency .....	12
PROJECT SCHEDULE.....	13
Site Improvements Package.....	13
New High School.....	14
Etna Elementary.....	15
Watkins HS to MS Renovation .....	16
PROJECT DOCUMENTATION.....	17
New High School.....	17
Etna Elementary.....	18
Watkins HS to MS Renovation .....	19
QUALITY CONTROL .....	20
Etna Elementary Renovation .....	20
Watkins HS to MS Renovation .....	21
SAFETY.....	22
Etna Elementary.....	22
Watkins HS to MS Renovations.....	23
PROGRESS PHOTOS.....	24
Etna Elementary.....	24
Watkins HS to MS Renovation .....	26



***Southwest Licking Local Schools  
New High School, New 4-5 Elementary, Etna Elementary, & Watkins HS to MS  
Progress Report No. 27, August 16th, 2021***

***PROJECT CONTACTS***

***All Projects***

Eric Baltzell, Garmann-Miller (419) 628-4240  
Clay Keith, Robertson (614) 374-4857  
Jessica Hall, Robertson (740) 814-6742

***Site Improvements Package***

Shira Elder, Garmann-Miller (419) 628-4240  
Mark Keith, Robertson (740) 404-1805  
Kevin Mohler, Robertson (740) 503-7218

***New 4-5 Elementary School***

Curt South, Garmann-Miller (419) 628-4240  
Clyde McIntire, Robertson (740) 404-0111  
AJ Saunders, Robertson (740) 348-6932

***New High School***

Brian Wolf, Garmann-Miller (419) 628-4240  
Mark Keith, Robertson (740) 404-1805  
Kevin Mohler, Robertson (740) 503-7218

***Etna Elementary Renovation***

Curt South, Garmann-Miller (419) 628-4240  
Clyde McIntire, Robertson (740) 404-0111  
AJ Saunders, Robertson (740) 348-6932

***Watkins Renovation***

Ted Musielewicz, Garmann-Miller (419) 628-4240  
Mark Keith, Robertson (740) 404-1805  
Kevin Mohler, Robertson (740) 503-7218



September 15, 2019 Drone Photo



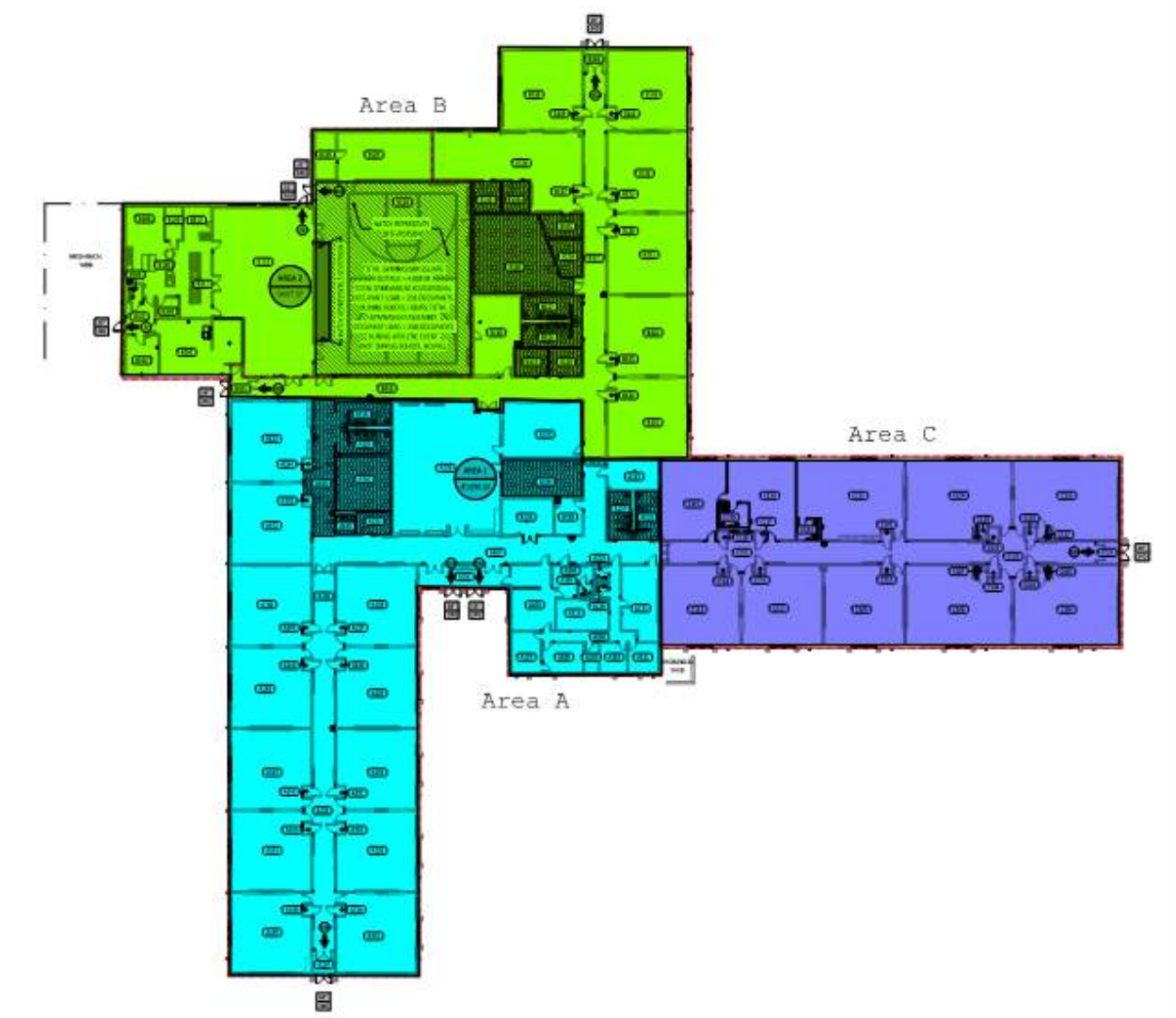
September 15, 2020 Drone Photo





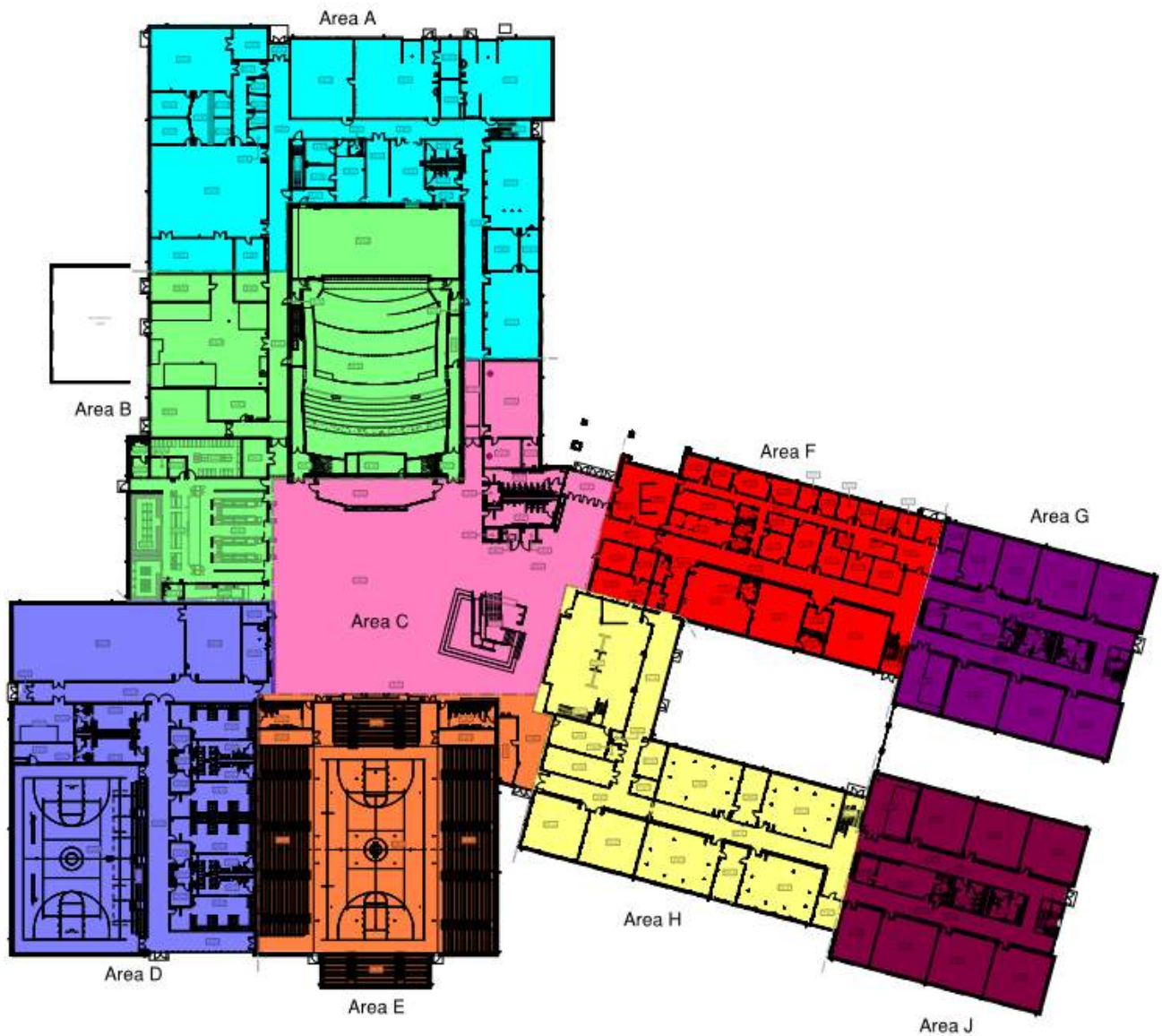
*Southwest Licking Local Schools  
New High School, New 4-5 Elementary, Etna Elementary, & Watkins HS to MS  
Progress Report No. 27, August 16th, 2021*

**PROJECT FLOOR PLANS**  
*Etna Elementary School*



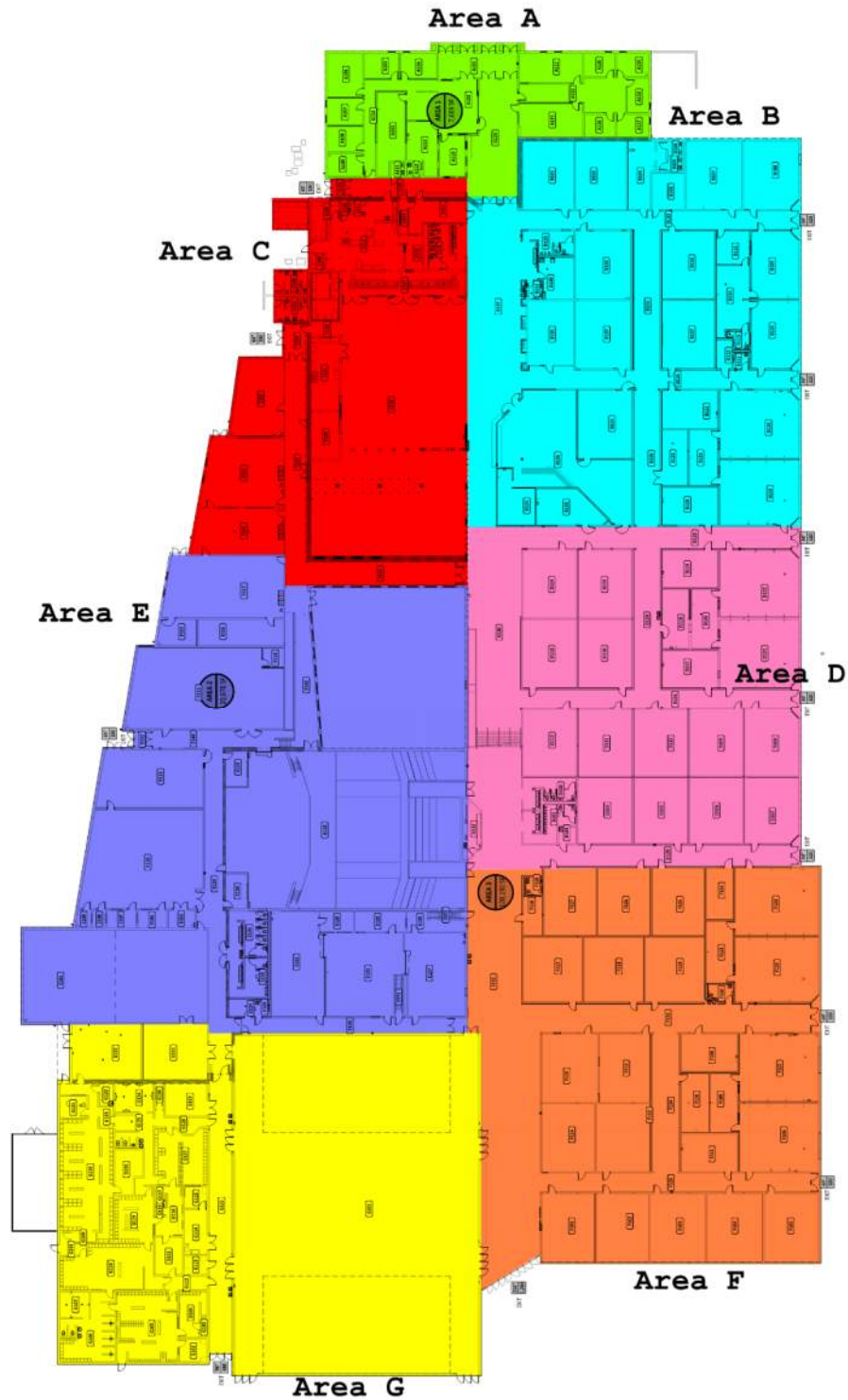
*Southwest Licking Local Schools  
New High School, New 4-5 Elementary, Etna Elementary, & Watkins HS to MS  
Progress Report No. 27, August 16th, 2021*

**PROJECT FLOOR PLANS**  
*New 9-12 High School*



*Southwest Licking Local Schools  
New High School, New 4-5 Elementary, Etna Elementary, & Watkins HS to MS  
Progress Report No. 27, August 16th, 2021*

**PROJECT FLOOR PLANS  
Watkins HS to MS Renovation**



**Southwest Licking Local Schools**  
**New High School, New 4-5 Elementary, Etna Elementary, & Watkins HS to MS**  
**Progress Report No. 27, August 16th, 2021**

**EXECUTIVE SUMMARY**

This report has been prepared to provide a project update for the Southwest Licking New High School, the Etna Elementary Renovations, and the Watkins High School to Middle School Renovation. It is intended to provide a summary review of the status of the project through September 16th, 2021.

**UPCOMING MEETINGS:**

October 13<sup>th</sup> at 10:00 am – Core Team Meeting (Once a Month)

September 21<sup>st</sup> 2:00 pm – Etna Elementary School Renovation Progress Meeting (Every Tuesday)

September 30<sup>th</sup> at 11:00 am – Watkins Renovation Progress Meeting (Every Other Thursday)

**Etna Elementary Renovations**

**CALENDAR DAYS TO COMPLETE**

Substantial Completion (Nov 28, 2021)      73

**New High School**

**CALENDAR DAYS TO COMPLETE**

Final Occupancy Achieved on July 2, 2021

**SCHEDULE & WORK COMPLETED**

- Area C
  - HVAC Controls Rough In & Terminations 95%
  - Light Fixtures & Above Ceiling Devices 100%
  - Electrical Above Ceiling Inspection 100%
  - HVAC Air Devices 100%
  - PR-031 Chilled Water Line Insulation 100%
  - LVT Flooring Install 100%
  - Casework Install 100%
  - Re-install Existing Sinks 60%
  - Fire Suppression Hydrostatic Testing 100%
  - Final Coat Paint 30%
- Area A
  - Technology Pull Wire 95%
  - HVAC Air Devices 100%
  - Start Up HVAC Equipment 100%
  - PR-031 Chilled Water Line Insulation 100%
  - LVT Flooring Install 100%
  - Casework Install 100%
  - Fire Suppression Hydrostatic Testing 100%
  - Electrical Above Ceiling Inspection 100%
- Area B
  - Electrical Wall Rough In@ Existing Walls 100%

**SCHEDULE & WORK COMPLETED**

- Owner Proposal Requests for Additional Work
- Punch List Work
- Site Work/ Exterior
- Begin final Detention Pond
- Completion of final punch list items, HS Teacher Correction Items, Owner Walk-Through Concerns

**CURRENT ISSUES**

- (7/15) In need of Structural details to mount monumental entry sign.
- Second boiler not functioning properly. Have been working on this issue and have narrowed down to electrical or control issue.
- Material delivery issues to complete or correct remaining punch items.

**Watkins HS to MS Renovation**

**CALENDAR DAYS TO COMPLETE**

Substantial Completion (July 18, 2022)      305

**SCHEDULE & WORK COMPLETED**

- Area F
  - Coordination Drawings to be signed off and ductwork to go into fabrication.





**Southwest Licking Local Schools**  
**New High School, New 4-5 Elementary, Etna Elementary, & Watkins HS to MS**  
**Progress Report No. 27, August 16th, 2021**

- HVAC Insulation 100%
- HVAC Above Ceiling Rough In & Inspect 100%
- Electrical Above Ceiling Rough-Ins 100%
- Technology Pull Wire 90%
- Fire Alarm Pull Wire 90%
- Acoustical Ceiling Grid Install 90%
- Light Fixtures & Above Ceiling Devices 90%
- HVAC Controls Terminations 90%
- HVAC Air Devices 90%
- Electrical Above Ceiling Inspection 100%
- LVT Flooring Install 100%
- Fire Suppression Hydrostatic Testing 100%
- Carpet @ Music Room 100%
- Site Work
  - Technology Raceways 100%
  - Site Lighting 40%
  - General Site Demolition 80%
  - Domestic / Fire Waterline Install 95%
  - Asphalt Demolition 90%
  - Sidewalk and Curb Installation 100%
- Installing hangers for ductwork
- Electrical Stud Wall Rough-In
- Electrical Overhead Rough-In – branch and conduits
- Underground Electrical Rough-Ins
- Clean-up demolition
- Plumbing underground Install
- Continue Metal Stud Wall install
- Install Drywall above ceiling
- Door Opening Masonry In-Fill
- Area D
  - Electrical Stud Wall Rough-In
  - Clean-up demolition
  - Plumbing underground layout
  - New Metal Stud Framing
  - Continue Metal Stud Wall install
  - Install Drywall above ceiling
- Area C
  - Wall Demolition
  - Electrical and HVAC Demolition
  - Plumbing Underground Concrete
- Area B
  - Wall Demolition
  - Electrical and HVAC Demolition
  - Plumbing Underground Concrete
  - New Metal Stud Framing
  - Partial Plumbing Inspection (9/16)
  - Remainder of inspection (9/20)
  - Continue Metal Stud Wall install
  - Install Drywall above ceiling
- Area E
  - Concrete Patching for Underground Plumbing
  - Wall Demolition
  - Auditorium Seating Demolition (Alternate Acceptance)
- Area A
  - Wall Demolition
- Area G
  - Wall Demolition
- Roofing
  - Begin Roofing Replacement above Area E

**CURRENT ISSUES**

- COVID Impact on delivery of Visual Display Surfaces moved to 11/5/21.
- Weather impact the week of 8/30/31 delayed asphalt paving start.

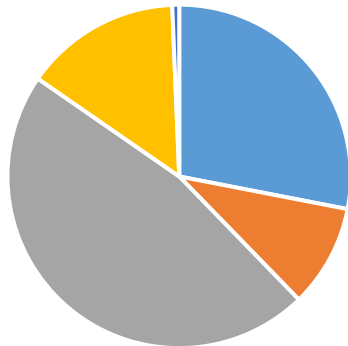
**CURRENT ISSUES**



**Southwest Licking Local Schools**  
**New High School, New 4-5 Elementary, Etna Elementary, & Watkins HS to MS**  
**Progress Report No. 27, August 16th, 2021**

**PROJECT BUDGETS**  
**Owner Contingency**

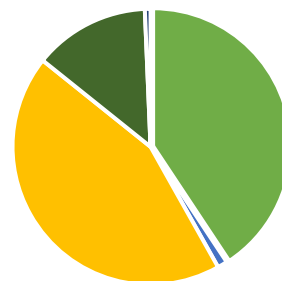
New 4-5 Elementary School  
Owner Contingency Usage



- Approved Change Orders
- Pending Change Orders
- Remaining Contingency
- Site Work Approved Change Orders
- Site Work Pending Change Orders

Owner Contingency	
	<b>Elementary School</b>
Original Amount	\$484,786.40
Approved Change Orders	\$160,737.63
Pending Change Orders*	\$55,389.28
Remaining Contingency	\$268,659.49
Site Work Approved Change Orders	\$84,338.28
Site Work Pending Change Orders	\$3,701.51
*Contains the Technology Equipment overage	

New High School  
Owner Contingency Usage



- Approved Change Orders
- Pending Change Orders
- Remaining Contingency
- Site Work Approved Change Orders
- Site Work Pending Change Orders

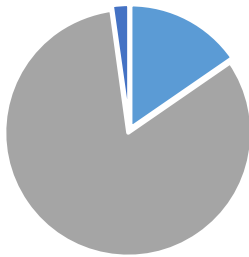
Owner Contingency	
	<b>High School</b>
Original Amount	\$1,304,165.46
Approved Change Orders	\$618,810.88
Pending Change Orders	\$17,799.82
Remaining Contingency	\$667,554.76
Site Work Approved Change Orders	\$206,483.37
Site Work Pending Change Orders	\$10,083.42



**Southwest Licking Local Schools**  
**New High School, New 4-5 Elementary, Etna Elementary, & Watkins HS to MS**  
**Progress Report No. 27, August 16th, 2021**

**PROJECT BUDGETS**  
**Owner Contingency**

Etna Elementary Renovation  
Owner Contingency Usage



- Approved Change Orders
- Pending Change Orders
- Remaining Contingency

Owner Contingency	
	<b>Etna</b>
Original Amount	\$158,924.60
Approved Change Orders*	\$851,872.65
Pending Change Orders	\$(22,854.58)
Remaining Contingency	\$(670,093.47)
*Includes Accepted Alternates (\$ 607,215)	

Watkins HS to MS Renovation  
Owner Contingency Usage

Owner Contingency	
	<b>Watkins</b>
Original Amount	\$581,626.79
Approved Change Orders	\$-
Pending Change Orders*	\$378,134.46
Remaining Contingency	\$203,492.33
*Includes Accepted Alternates (\$ 60,7215)	



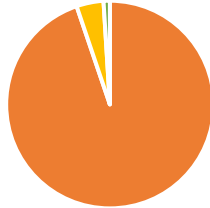
- Approved Change Orders
- Pending Change Orders
- Remaining Contingency



**Southwest Licking Local Schools**  
**New High School, New 4-5 Elementary, Etna Elementary, & Watkins HS to MS**  
**Progress Report No. 27, August 16th, 2021**

**PROJECT BUDGETS**  
**CMR Contingency**

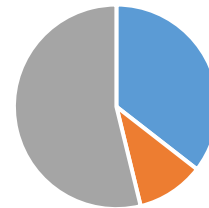
Site Improvements Package  
CMR Contingency Usage



■ Approved Change Orders ■ Pending Change Orders  
■ Remaining Contingency

CMR Contingency	
	<b>Site Work</b>
Original Amount	\$84,760.00
Approved Change Orders	\$80,342.69
Pending Change Orders	\$3,596.27
Remaining Contingency	\$821.04

New 4-5 Elementary School  
CMR Contingency Usage



■ Approved Change Orders ■ Pending Change Orders  
■ Remaining Contingency

CMR Contingency	
	<b>Elementary School</b>
Original Amount	\$343,225.00
Approved Change Orders	\$121,875.48
Pending Change Orders	\$36,613.97
Remaining Contingency	\$184,735.55

New High School  
CMR Contingency Usage



■ Approved Change Orders ■ Pending Change Orders  
■ Remaining Contingency

CMR Contingency	
	<b>High School</b>
Original Amount	\$665,549.00
Approved Change Orders	\$378,977.69
Pending Change Orders	\$225,833.19
Remaining Contingency	\$60,738.12

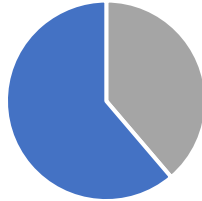




*Southwest Licking Local Schools*  
*New High School, New 4-5 Elementary, Etna Elementary, & Watkins HS to MS*  
*Progress Report No. 27, August 16th, 2021*

**PROJECT BUDGETS**  
**CMR Contingency**

Etna Elementary  
CMR Contingency Usage



■ Approved Change Orders ■ Pending Change Orders  
■ Remaining Contingency

CMR Contingency	
	High School
Original Amount	\$67,895.09
Approved Change Orders	\$-
Pending Change Orders	\$26,339.87
Remaining Contingency	\$41,555.22

Watkins HS to MS Renovations  
CMR Contingency Usage



■ Approved Change Orders ■ Pending Change Orders  
■ Remaining Contingency

CMR Contingency	
	High School
Original Amount	\$272,395.13
Approved Change Orders	\$-
Pending Change Orders	\$-
Remaining Contingency	\$272,395.13



*Southwest Licking Local Schools  
New High School, New 4-5 Elementary, Etna Elementary, & Watkins HS to MS  
Progress Report No. 27, August 16th, 2021*

***PROJECT SCHEDULE  
Site Improvements Package***

***RCS Internal Verification Dates***

<b><u>SCHEDULE FROM BID</u></b>	<b><u>SCHEDULED</u></b>	<b><u>STATUS</u></b>
<i>Notice to Proceed</i>	<i>February 28, 2019</i>	<i>Complete</i>
<i>Build Building Pad – Elementary School</i>	<i>June 10, 2019</i>	<i>Complete</i>
<i>Build Building Pad – High School</i>	<i>June 26, 2019</i>	<i>Complete</i>
<i>Substantial Completion of Elementary School</i>	<i>November 19, 2020</i>	<i>Complete</i>
<i>Substantial Completion of All Work (less Items Below)</i>	<i>June 7, 2021</i>	<i>Complete</i>
<i>Spread Topsoil, Reseed, and Top Coat of Asphalt</i>	<i>July 7, 2021</i>	<i>Complete</i>

**Schedule Two Week Look Ahead**

- Monitor / maintain seeding. Repair damaged areas from rain as required.
- Adjust mounded islands, once revised direction provided by AE to address areas of ponding. (Status Quo)
- Proceed with final detention area work – scheduled to start week of 9/20
- Address Rt. 40 entry island topsoil, landscaping, and seeding



*Southwest Licking Local Schools  
New High School, New 4-5 Elementary, Etna Elementary, & Watkins HS to MS  
Progress Report No. 27, August 16th, 2021*

**PROJECT SCHEDULE**  
*New High School*

***RCS Internal Verification Dates***

<b><u>MILESTONE SCHEDULE FROM BID</u></b>	<b><u>SCHEDULED</u></b>	<b><u>STATUS</u></b>
<i>Notice to Proceed</i>	<i>May 24, 2019</i>	<i>Complete</i>
<i>Substantial Completion of All Work (less items below)</i>	<i>June 7, 2021</i>	<i>Complete</i>
<i>Spread Topsoil, Reseed, and Top Coat of Asphalt</i>	<i>July 7, 2021</i>	<i>Complete</i>

**Schedule Two Week Look Ahead**

***Testing and Balancing***

- Final Air and Water Balancing Report to be issued week of 9/13.

***Proposal Requests***

- Schedule added work as Change orders are executed

***Building Envelope & Exterior***

- Complete remaining open punch list items interior and exterior
- Begin final detention Area work



*Southwest Licking Local Schools  
New High School, New 4-5 Elementary, Etna Elementary, & Watkins HS to MS  
Progress Report No. 27, August 16th, 2021*

**PROJECT SCHEDULE**  
*Etna Elementary*

***RCS Internal Verification Dates***

<b><u>SCHEDULE FROM BID</u></b>	<b><u>SCHEDULED</u></b>	<b><u>STATUS</u></b>
<i>Notice to Proceed</i>	<i>November 24, 2020</i>	<i>Complete</i>
<i>Substantial Completion of Elementary School</i>	<i>November 28, 2021</i>	

**Schedule Two Week Look Ahead**

***Area A***

- Install Toilet Accessories
- Re-install Existing Sinks in Classrooms
- Install New Hardware on Existing Doors
- Drop Ceiling Tile
- Final Coat Paint

***Area B***

- Install Casework
- Install LVT Flooring
- Re-install Existing Sinks in Classrooms
- Install New Hardware on Existing Doors

***Area C***

- Re-install Existing Sinks in Classrooms
- Install New Hardware on Existing Doors
- Drop Ceiling Tile
- Final Coat Paint
- Install Electrical Wall Devices
- Install Fire Alarm Wall Devices

***Sitework***

- Site Demolition
- Install Domestic/ Fire Water Line
- Site Grading
- Cedar Soffit Repair





*Southwest Licking Local Schools  
New High School, New 4-5 Elementary, Etna Elementary, & Watkins HS to MS  
Progress Report No. 27, August 16th, 2021*

**PROJECT SCHEDULE**  
*Watkins HS to MS Renovation*

***RCS Internal Verification Dates***

<b><u>SCHEDULE FROM BID</u></b>	<b><u>SCHEDULED</u></b>	<b><u>STATUS</u></b>
<i>Notice to Proceed</i>	<i>March 30th, 2021</i>	
<i>Construction Start</i>	<i>June 1<sup>st</sup>, 2021</i>	
<i>Substantial Completion</i>	<i>July 18<sup>th</sup>, 2021</i>	<i>(Alternate Contingent)</i>

**Schedule Two Week Look Ahead**

***Area F***

- Clean up - Demolition
- New metal stud framing

***Area D***

- Clean up - Demolition
- Plumbing Underground complete
- New metal stud framing

***Area B***

- Wall Demolition
- Electrical and HVAC Demolition
- Plumbing Underground Concrete
- New metal stud framing

***Area E***

- Auditorium Seating Demolition

***Roofing***

- Document and submit final approved



**Southwest Licking Local Schools**  
**New High School, New 4-5 Elementary, Etna Elementary, & Watkins HS to MS**  
**Progress Report No. 27, August 16th, 2021**

**PROJECT DOCUMENTATION**  
**New High School**

The timely flow of all information is critical to any construction project. Specifically, Submittals (Shop Drawings) and Request for Interpretation are two critical areas that need to be closely monitored to assure a lack of information does not impede the project schedule. The following is a brief summary of the current Submittal and RFI status and is intended to highlight critical items to all parties.

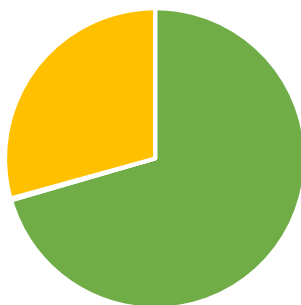
*The following items may present potential concerns to the project schedule:*

Submittal/RFI

Responsibility

Schedule Concern

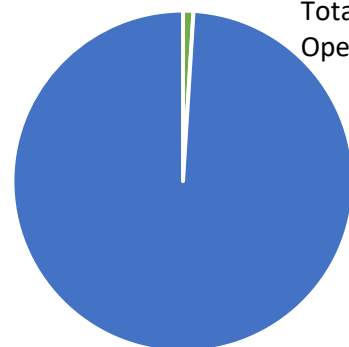
**New High School  
Submittals**



Total Submittals: 1315  
 Approved: 927  
 Pending: 3  
 Outstanding: 0  
 Closeout: 385

■ Approved Submittals   ■ Pending Submittals  
 ■ Closeout Submittals   ■ Outstanding Submittals

**New High School  
Request for Information**



Total RFIs: 207  
 Open RFIs: 2

■ Open RFIs   ■ Closed RFIs



**Southwest Licking Local Schools**  
**New High School, New 4-5 Elementary, Etna Elementary, & Watkins HS to MS**  
**Progress Report No. 27, August 16th, 2021**

**PROJECT DOCUMENTATION**  
**Etna Elementary**

The timely flow of all information is critical to any construction project. Specifically, Submittals (Shop Drawings) and Request for Interpretation are two critical areas that need to be closely monitored to assure a lack of information does not impede the project schedule. The following is a brief summary of the current Submittal and RFI status and is intended to highlight critical items to all parties.

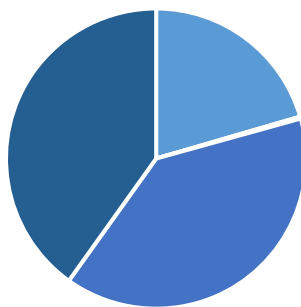
*The following items may present potential concerns to the project schedule:*

Submittal/RFI

Responsibility

Schedule Concern

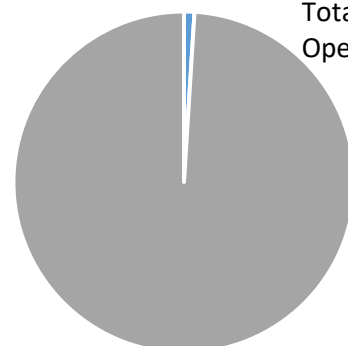
Etna Elementary  
Submittals



Total Submittals: 561  
 Approved: 115  
 Pending: 1  
 Outstanding: 225  
 Closeout: 220

- Approved Submittals    ■ Pending Submittals
- Closeout Submittals    ■ Outstanding Submittals

Etna Elementary  
Request for Information



Total RFIs: 94  
 Open RFIs: 3

- Open RFIs    ■ Closed RFIs



**Southwest Licking Local Schools**  
**New High School, New 4-5 Elementary, Etna Elementary, & Watkins HS to MS**  
**Progress Report No. 27, August 16th, 2021**

**PROJECT DOCUMENTATION**  
**Watkins HS to MS Renovation**

The timely flow of all information is critical to any construction project. Specifically, Submittals (Shop Drawings) and Request for Interpretation are two critical areas that need to be closely monitored to assure a lack of information does not impede the project schedule. The following is a brief summary of the current Submittal and RFI status and is intended to highlight critical items to all parties.

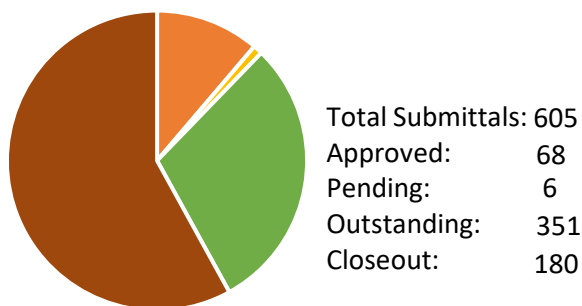
*The following items may present potential concerns to the project schedule:*

Submittal/RFI

Responsibility

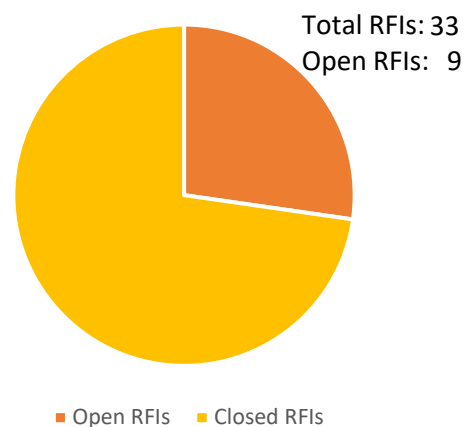
Schedule Concern

Watkins HS to MS Renovations  
Submittals



■ Approved Submittals    ■ Pending Submittals  
■ Closeout Submittals    ■ Outstanding Submittals

Watkins HS to MS Renovations  
Request for Information



■ Open RFIs    ■ Closed RFIs





***Southwest Licking Local Schools  
New High School, New 4-5 Elementary, Etna Elementary, & Watkins HS to MS  
Progress Report No. 27, August 16th, 2021***

***QUALITY CONTROL  
Etna Elementary Renovation***

The monitoring of safety and quality of work is an important issue, which Robertson Construction Services and the Subcontractors take very seriously. Robertson continually monitors the Subcontractor's safety practices and quality of work via on-site inspections.

***Quality Control***

We are reviewing all of the "work in place" to verify it was installed as designed. Any discrepancies from the Contract Documents are listed in field reports and distributed to the proper Subcontractor for corrections. We also discuss the items in our weekly subcontractor meetings to ensure each concern has proper closure. The entire Design Team has taken a thorough and proactive approach to items. Robertson continues to monitor the reports from Geotechnical Consultants Inc. Corrections are being made in response to these reports.

Additionally, pre-installation meetings are being scheduled with the Architect and appropriate subcontractors to ensure the work is consistent with the contract specifications and on par with quality standards.

The following Pre-Installation Meetings have occurred:

- 084313-Aluminum-Framed Storefronts
- 088000-Glazing
- 093000-Tiling
- 096500-Resilient Flooring
- 270000-Technology Kick-Off Meeting
- 087100-Door Hardware
- 123550-Educational Casework
- 312200-Grading



***Southwest Licking Local Schools  
New High School, New 4-5 Elementary, Etna Elementary, & Watkins HS to MS  
Progress Report No. 27, August 16th, 2021***

***QUALITY CONTROL  
Watkins HS to MS Renovation***

The monitoring of safety and quality of work is an important issue, which Robertson Construction Services and the Subcontractors take very seriously. Robertson continually monitors the Subcontractor's safety practices and quality of work via on-site inspections.

***Quality Control***

We are reviewing all of the "work in place" to verify it was installed as designed. Any discrepancies from the Contract Documents are listed in field reports and distributed to the proper Subcontractor for corrections. We also discuss the items in our weekly subcontractor meetings to ensure each concern has proper closure. The entire Design Team has taken a thorough and proactive approach to items. Robertson continues to monitor the reports from Geotechnical Consultants Inc. Corrections are being made in response to these reports.

Additionally, pre-installation meetings are being scheduled with the Architect and appropriate subcontractors to ensure the work is consistent with the contract specifications and on par with quality standards.

The Following Pre-Installation Meetings are to be held per the Specifications:

- 042000 – Unit Masonry
- 070150.19 – Preparation for Re-Roofing
- 075330 – Membrane Roofing
- 076100 – Sheet Metal Roofing
- 076200 – Sheet Metal Flashing and Trim
- 081116 – Aluminum Doors
- 084313 – Aluminum-Framed Storefronts
- 087100 – Door Hardware
- 088000 – Glazing
- 093000 – Tiling
- 096500 – Resilient Flooring
- 122400 – Window Shades
- 123550 – Educational Casework
- 123552 – Library Casework
- 210501 – Fire Protection Materials/Methods
- 220501 – Plumbing Materials & Methods
- 230501 – Mechanical Materials & Methods
- 260536 – Cable Trays for Electrical Systems
- 262701 – Electrical Service Entrance
- 323223 – Segmental Freestanding & Retaining Walls
- 329219 – Seeding
- 334211 – Stormwater Gravity Piping

The following Pre-Installation Meetings have occurred:



***Southwest Licking Local Schools  
New High School, New 4-5 Elementary, Etna Elementary, & Watkins HS to MS  
Progress Report No. 27, August 16th, 2021***

***SAFETY  
Etna Elementary***

January 2021 – An RCS safety evaluation was conducted on January 11 and there were no safety concerns observed.

February 2021 – An RCS safety evaluation was conducted on February 10<sup>th</sup> and (2) safety concerns were documented. All safety concerns have since been abated.

April 2021 – A safety audit was conducted by Robertson Safety Manager on April 16<sup>th</sup>. There were two (2) violations that were noted and abated.

May 2021 - A safety audit was conducted by Robertson Safety Manager on May 20<sup>th</sup>. There were no safety concerns observed.

June 2021 - A safety audit was conducted by Robertson Safety Manager on June 3<sup>rd</sup>. There were two (2) violations that were noted and abated.

July 2021 - A safety audit was conducted by Robertson Safety Manager on July 7<sup>th</sup>. There was (1) violation that was noted and the issue was abated at the time of the inspection.

August 2021 - A safety audit was conducted by Robertson Safety Manager on August 10<sup>th</sup>. There were seven (7) violations that were noted and abated.

RCS also continues to perform monthly safety audits, and the Subcontractors quickly abate any concerns noted during the walkthrough.



***Southwest Licking Local Schools  
New High School, New 4-5 Elementary, Etna Elementary, & Watkins HS to MS  
Progress Report No. 27, August 16th, 2021***

***SAFETY  
Watkins HS to MS Renovations***

July 2021 - A safety audit was conducted by Robertson Safety Manager on July 7<sup>th</sup>. There was one (1) violation that was noted and the issue was abated at the time of the inspection.

August 2021 - A safety audit was conducted by Robertson Safety Manager on August 10<sup>th</sup>. There were ten (10) violation that was noted and the issue was abated at the time of the inspection.

RCS also continues to perform monthly safety audits, and the Subcontractors quickly abate any concerns noted during the walkthrough.





*Southwest Licking Local Schools  
New High School, New 4-5 Elementary, Etna Elementary, & Watkins HS to MS  
Progress Report No. 27, August 16th, 2021*

**PROGRESS PHOTOS**

**Etna Elementary**

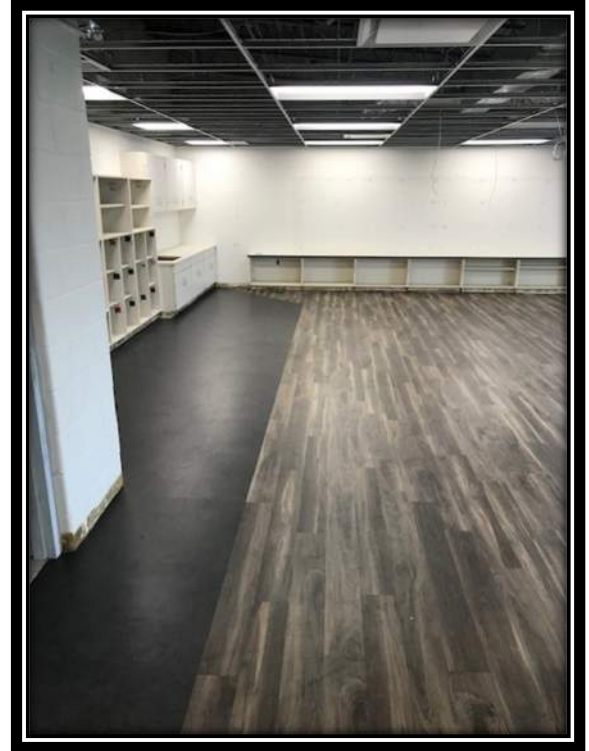
Soft Surface Playground Area



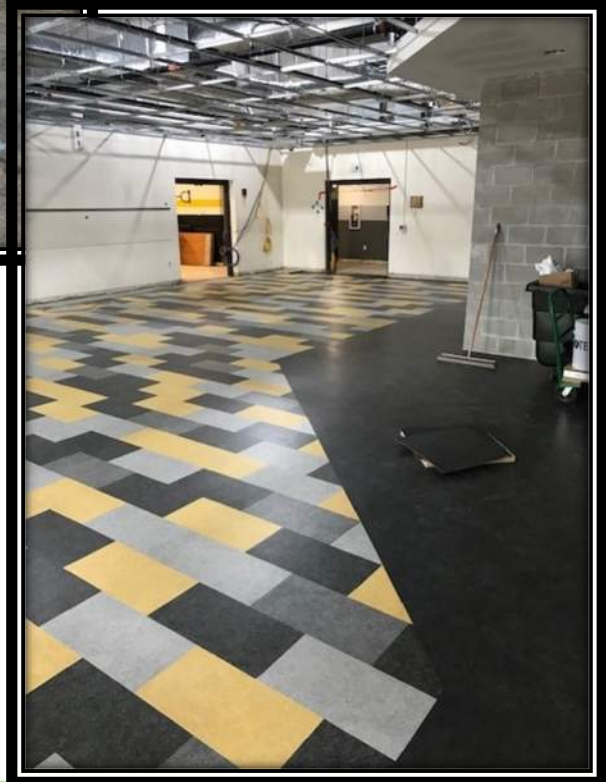
Milling Asphalt



Accent Floor in Classroom



Student Dining Floor



Curb & Sidewalk Forms



*Southwest Licking Local Schools  
New High School, New 4-5 Elementary, Etna Elementary, & Watkins HS to MS  
Progress Report No. 27, August 16th, 2021*

**PROGRESS PHOTOS**  
*Etna Elementary*

New Cabinets in Classroom



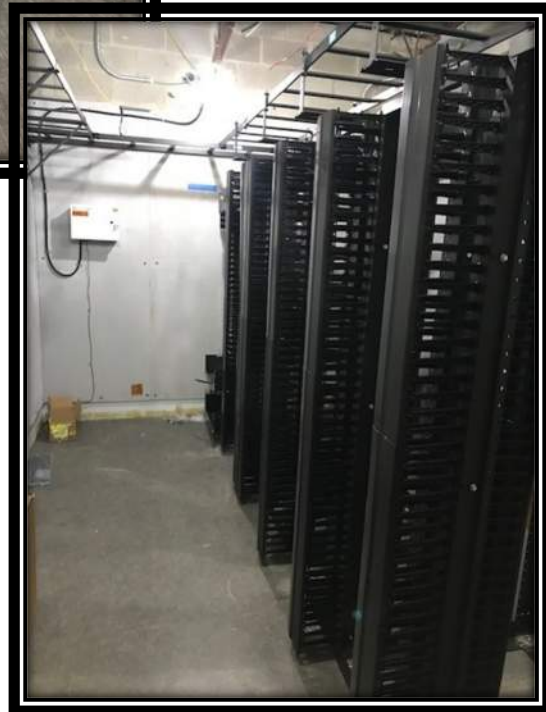
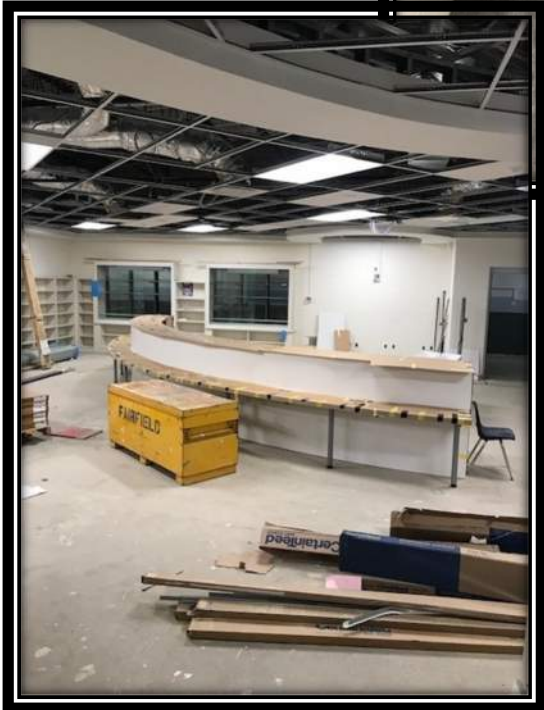
Staff Workroom



New Floor in Classroom



Media Center



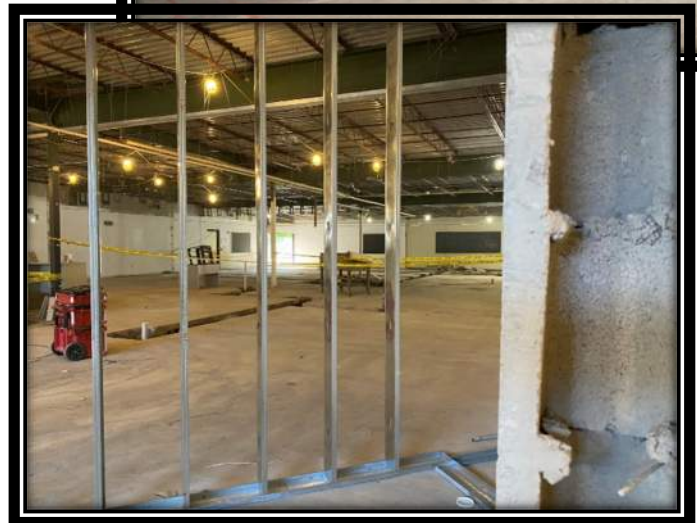
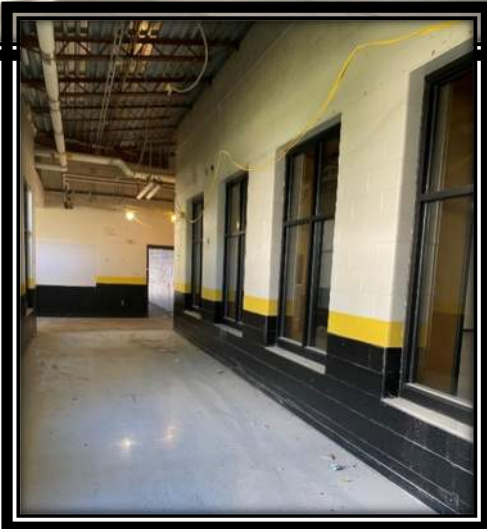
Technology  
Closet





*Southwest Licking Local Schools  
New High School, New 4-5 Elementary, Etna Elementary, & Watkins HS to MS  
Progress Report No. 27, August 16th, 2021*

***PROGRESS PHOTOS  
Watkins HS to MS Renovation***



*Southwest Licking Local Schools  
New High School, New 4-5 Elementary, Etna Elementary, & Watkins HS to MS  
Progress Report No. 27, August 16th, 2021*

***PROGRESS PHOTOS  
Watkins HS to MS Renovation***

